

# Annual Report 2021-22



**Breckenridge  
Outdoor  
Education  
Center**





## BOARD OF DIRECTORS

**Barb Rankin**, *Chair, Cornerstone Real Estate Rocky Mountains (Owner), Breckenridge, CO\**

**Leslee Balten**, *Vice Chair, Ciancio Ciancio Brown, P.C. (Attorney/ Partner), Breckenridge, CO\**

**Kristen Bennett**, *Secretary, Alzheimer's Association Region 4 (Finance Manager), Denver, CO\**

**Braden McMillan**, *Treasurer, First Bank (Executive Vice President), Breckenridge, CO\**

**Dr. Erin Beckerman**, *Colorado Mountain Medical – Dillon (Family Physician), Breckenridge, CO*

**John Buhler**, *Breckenridge Ski Resort (VP & COO/Retired), Breckenridge, CO\**

**Jody Churich**, *Breckenridge Ski Resort (VP & COO), Dillon, CO*

**Gene Dayton**, *Breckenridge Nordic Center (Owner), Breckenridge, CO*

**Mike Dudick**, *Breckenridge Grand Vacations (Co-Owner/CEO), Breckenridge, CO*

**Robert Gregory**, *West Brown Huntley, P.C. (Attorney/Partner), Breckenridge, CO*

**Reed Owens**, *5th Judicial District (District Court Judge), Breckenridge, CO*

**Jennifer Schappert**, *Summit County School District (Teacher), Breckenridge, CO*

**Gurney Sloan**, *Membership Marketing Partners, LLC (CEO/ Retired), Colorado Springs/Frisco, CO\**

**Dr. Aris Sophocles**, *Family Care Medical Center (Owner/Retired), Denver, CO\**

**Debbie Trevino**, *Summit 2nd Homes (Owner), Silverthorne, CO*

\* Indicates Executive Committee

# A Letter from our Executive Director and Board Chair

## *A Letter from our Executive Director*

As we move forward into a new year, I am excited to present you with BOEC's 2021-22 Annual Report. This report highlights all that we achieved throughout the year, which was made possible through your friendship and generosity and is a testament to the hard work and dedication of our staff, volunteers and supporters.

As you will see throughout this report, you helped us serve 2,065 individuals across 5,034 program days on our slopes, rivers, ropes course and bike paths. In fact, 84% of every dollar donated went directly to programs, which once again earned BOEC several accreditations including Guidestar's Platinum Seal of Transparency and Charity Navigator's Giving Excellence Award.

We all have a lot to be proud of in BOEC. Our greatest achievement, though, is our continually improving delivery of personalized programs and lessons that remove barriers for every member of our great big adaptive sports family.

Consider Jackson, pictured on the cover of this report, conquering the climbing wall even though he faces several physical and cognitive challenges. Jackson is all determination, enthusiasm, and his attitude exudes "I can do it". All Jackson needed from BOEC was the opportunity to try something he never thought possible with a trusted instructor and the encouragement of the BOEC team. With your ongoing

support, we will continue removing barriers for most anybody who knocks on our door and wants to venture outside.

I can make that promise to you because your support helped us achieve something else truly amazing this year. Late last summer, we completed our next five-year strategic plan. Among other things, this plan secures a long-term presence for our headquarters and Wilderness Program facilities; further strengthens our financial durability; and enhances our ability to train, retain, and reward the best staff in the business of adaptive recreation. Thanks to you and the many voices who contributed to this plan, BOEC's future is brighter than ever.

As always, I'd be happy to talk to you in more detail about all that BOEC is doing today and all that we have planned for the future. You can contact me at 970-453-6422 or Sonya@BOEC.org with questions or to set up a time to talk. In the meantime, on behalf of our board, staff, and clients, thank you so much for all you've done for BOEC.



With warm regards,



**SONYA NORRIS**  
Executive Director

## *A Letter from our Board Chair*

My first exposure to the BOEC was over ten years ago, when a family member was a participant. Watching the joy and confidence that a day on the slopes with the BOEC brought to our family, I immediately knew that I wanted to help make these days a reality for as many people as possible.

Since then, I have had the good fortune to contribute as both a volunteer and on the board. Spending time as a volunteer gives me a great appreciation for the hard work, patience, and ingenuity that the BOEC staff and interns show all day, every day, to provide the best experience possible to our participants.

As a board member it has been my great honor to serve and make sure that the BOEC mission can continue to thrive for many years to come and to support the staff, interns and the many volunteers who make these life changing experiences happen. In this past year we developed our new strategic plan to guide

us in the future, emerged from the pandemic stronger than ever, and received a record amount of donations to support our programs.

Thank you to our Key Partners, Breckenridge Resort, Keystone Resort, Vail Resorts' EpicPromise, Town of Breckenridge, Breckenridge Grand Vacations, Copper Mountain, and Blue River Sports/Mountain Wave for making it possible for BOEC to execute our mission. Thank you to all of our generous donors for your ongoing support. Lastly, thank you to the staff, interns and volunteers for your inspiring dedication and passion for helping people get outside.

We look forward to another great year of providing amazing experiences to our participants and their families.



All my best,



**BARB RANKIN**  
Chair of the Board (2021-2023)

# Who We Served

BOEC is very proud of the number of participants we were able to serve in 2021-22 despite some programming disruption due to the ongoing COVID-19 pandemic.

## BRECKENRIDGE OUTDOOR EDUCATION CENTER FISCAL YEAR DEMOGRAPHICS 2021-22

UNIQUE  
INDIVIDUALS SERVED  
  
PROGRAMMING DAYS

Ski Program	Wilderness Program	Total ALL PROGRAMS
945	1,120	2,065
2,597	2,437	5,034



**HEROIC MILITARY  
PROGRAMMING**  
149 Veterans  
25 Family Members  
617 Programming Days

### Scholarship Amounts Awarded

SKI	\$66,805
WILDERNESS	\$38,515
MILITARY	\$74,940
TOTAL	\$180,260

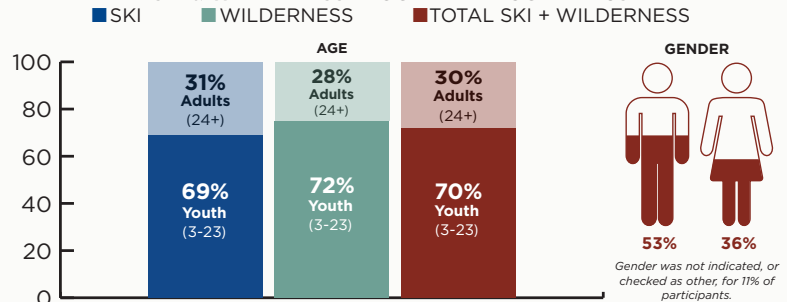
% of Individuals on Scholarship 26%

% of Program Days Utilizing Scholarship 17%

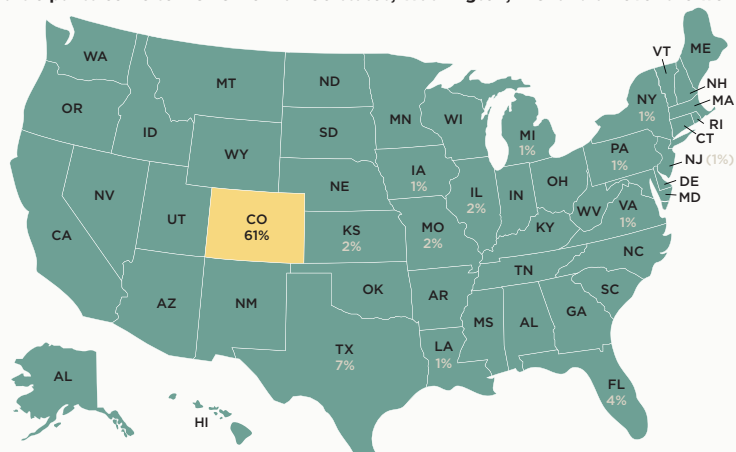
**THE MOST COMMONLY SERVED  
DISABILITIES & SPECIAL NEEDS IN  
2021-22 WERE:** At-risk youth, autism, ADD/ADHD, amputee, cleft lip & palate, cerebral palsy, developmentally/cognitive/learning disabled, Down syndrome, local youth suffering from social isolation, mental illness, multiple sclerosis, post-traumatic stress disorder, spinal cord injury, traumatic brain injury and visually impaired.



### SKI & WILDERNESS PROGRAM DEMOGRAPHICS



Participants come to BOEC from all 50 states, Washington, D.C. and all over the world.



### INTERNS



26

15 Winter, 11 Summer

### ACTIVE VOLUNTEERS



191

78 new volunteers and 113 returning volunteers completed 8,625 hours of volunteering and 468 training hours.



# The 2021-22 Year in Highlights

## PROGRAMS

### ADAPTIVE SKI AND SNOWBOARD PROGRAM

BOEC Adaptive Ski and Snowboard Program witnessed a robust attendance during the 2021-22 winter season. Even with capacity restricted to 85% due to safety measures, we successfully completed 2,597 program days and served 945 participants across our three locations including Breckenridge, Keystone and Copper Mountain. Our program enabled individuals with various disabilities and special needs to experience skiing and snowboarding alongside skilled instructors and dedicated volunteers, equipped with the necessary gear for an unforgettable mountain experience.

Many of our diverse, long-standing partners returned this year, including Evergreen Parks & Recreation, Summit Middle School, Summit High School, Emily Griffith Center, Snow Sports Alliance, Team Semper Fi, the Wounded Warrior Project and many others. We also welcomed new groups like Wheelchairs 4 Kids and The Traveling Gnomes. The ski program at Copper Mountain saw 98 programming days, Keystone Adaptive Center had 590, and Breckenridge hosted the remaining 1,909 days.

Our experienced staff diligently trained instructors for the season, ensuring student safety and facilitating ski instructor certifications through PSIA. Enthusiastic volunteers supported the ski program instructors in large numbers. We continue to receive heartwarming feedback, including letters and emails recounting life-changing experiences at BOEC.

Thanks to numerous generous contributors, we have been able to enhance our adaptive equipment fleet once again, allowing us to provide the adaptive industry's best for our skiers and snowboarders. Our program could not operate without the help of our Key Partner Vail Resorts' EpicPromise who provides us with significant support including space at both Breckenridge and Keystone Resorts to operate the adaptive program. Prior to the start of the 2021-22 season, Keystone Resort generously provided additional space at the Mountain House, enabling us to expand the Keystone Adaptive Center. Copper Mountain remains a steadfast partner in growing the program at their ski area and Blue River Sports/Mountain Wave continues to donate all ski rental equipment for any participants in need coming to Breckenridge Ski Resort to ski or snowboard with BOEC.

The staff of BOEC's Adaptive Ski and Snowboard program remains committed to providing excellent customer service, offering quality programs, prioritizing

---

*Noah was hardly even verbal when we started coming to BOEC. This year he was skiing with our family. It has made a huge change for Noah and our family. We believe in inclusion and only go where he can be included so having this program has been such a beautiful thing for all of us. It gives us hope that eventually everyone will promote full inclusion and see disability as only a different ability to be loved and fostered.*

—Parent of BOEC Adaptive Ski Program Participant

---

staff training, and ensuring effective risk management. This year, we are proud to announce the addition of a full-time assistant director who will support these goals and contribute to the success of the team as a whole.

### WILDERNESS PROGRAM

Our BOEC Wilderness Program has been steadily rebuilding since the pandemic brought programming to a near standstill in 2020 and we are excited to report during the 2021-22 season, we served 1,120 students over 2,437 program days.

Long-standing groups like BreckWild – Breckenridge Wilderness and Environmental Medicine Elective, Brain Injury Alliance of Colorado, Vail Mountain School, Stratton High School, Children's Hospital Colorado, The Challenge Foundation, Colorado Academy, and Mountain Mentors returned to BOEC. New groups such as The Traveling Gnomes, Evergreen Parks and Recreation, and the Evergreen Adventure Club joined us for day programming. We also reintroduced open-enrollment camps like Camp Big Tree and Wilderness Camp, serving youth aged 12-21 with various disabilities and offering activities like canoeing, rock climbing, ropes course, camping, and more.

During the summer and fall of 2022, staff conducted scouting missions to new locations which will help us develop curriculum for future and current operational areas. The fall shoulder season offers a prime opportunity to attract new groups interested in experiencing adventures in different areas of Colorado and Utah.

We added a new all-wheel-drive van with eye-catching summer and winter graphics to replace aging vehicles in our fleet. A contest to name the van resulted in the name of "Joy" – embodying what we hope to bring to everyone who comes to BOEC.

Other equipment added this year include a new raft for our fleet to replace historic Ol' Emma Dean, a

---

*The BOEC team is a true inspiration and blessing. Every member of the team showed such positivity, patience, caring, compassion and commitment to the families that were present. Their gregarious attitudes and attention to details to every individual adult or child was amazing. Every BOEC member I had the privilege to speak to one on one was inspirational. The entire team was and is at the top of their game.*

—Operation TBI Freedom Weekend Family Retreat

---

trustworthy vessel with many river miles estimated to be at least 25 years old. A Hase handcycle was added to the BOEC adaptive cycling program allowing for more of our participants to enjoy the thrill of cycling on the bike paths around Summit County.

To better serve the needs of our Wilderness and Adaptive Ski and Snowboard programs, two long-time BOEC staffers transitioned to full time positions as an Operations Manager and a Facilities Manager. We are proud of our exceptional Wilderness Team who continue to work hard to offer high-quality, and enjoyable courses.

### HEROIC MILITARY PROGRAM

At BOEC, we are dedicated to supporting active-duty military personnel, veterans, members of the Guard and Reserve, and their families through our Heroic Military Program. Conducted in both summer and winter seasons, this program focuses on fostering quality family time outdoors and aiding in the healing of visible and invisible injuries. With our service partners, we design activities tailored to the unique needs of military members, creating an environment that encourages social connections among those overcoming similar challenges.

In 2021-22, we served 149 military members and 25 family members across 617 programming days. With over \$150,000 granted in scholarships and equipment for military program funding last year, we strive to make this program accessible to as many service members as possible, at low or no cost. This funding is made possible thanks to the Department of Veteran Affairs and Circle of Support partners Limber Grove and First Nation Group among several other gracious donors.

In addition to these generous contributors, long time partners Wounded Heroes Family Adventures gave a generous gift of \$75,000 to support BOEC's Heroic Military Program and continue their commitment to serving veterans and their families.

During the winter season, we were delighted to welcome back frequent military groups such as Team Semper Fi, Adaptive Adventures Military Camp, Wounded Warriors Project, and The Not Forgotten to Breckenridge, Keystone, and Copper Mountain for lessons with our Adaptive Ski and Snowboard Program. We also hosted smaller groups and individual veterans for lessons during the winter. Throughout the 2021-22 winter season, we

served 85 military participants over 319 program days.

Our summer veterans and family programs consist of exciting adventurous activities based out of BOEC's Wilderness Campus in Breckenridge and programs that travel to other beautiful locations in Colorado and Utah. We are proud to announce a new partnership with Craig Hospital's Operation TBI Freedom, catering to veterans who have suffered mild to moderate traumatic injuries to the brain during their service. This collaboration enabled us to offer three new summer events for military members and their families. In addition, recurring events include a river trip on the San Juan River in partnership with Telluride Adaptive Sports Center (TASP) and three other river trips down Ruby Horsethief and Westwater Canyons. Last summer alone, we hosted 89 military participants and their family members across 298 program days.

### INTERNSHIP PROGRAM

Since its inception in 1976, the BOEC Internship Program has made a significant impact across the globe with more than 1,000 graduates over the past 47 years. Annually, we aim to welcome 15 interns during the winter season and 12 interns for the summer season.

Interns undergo rigorous training in both winter and summer to ensure they are proficient in safety measures and can conduct our programming to the highest standards.

During the winter of 2021-22 we welcomed 15 interns to the program and the summer 2022 session welcomed 11, all talented, hardworking and inspiring young people eager to learn about adaptive outdoor recreation. Each year a significant number of both summer and winter graduates from the program are hired to become instructors or course directors which aligns with our goal of promoting from within and retaining well-trained field staff.

---

*BOEC has taught me things I wouldn't have had the opportunity to learn anywhere else. I have learned things about myself personally from new outdoor skills to work pet peeves. In addition to personal development, I have also gained professional skills that will carry me far in my career. I honestly am a different person now than I was at the beginning of the season. I have grown in more ways than I thought were possible. Every experience and opportunity that I have had this summer has provided a learning opportunity for me and I will take it all with me as I embark on my next journey.*

—BOEC Summer Intern

---

### VOLUNTEER PROGRAM

We are thrilled to report that this year, 191 dedicated volunteers donated a total of 8,625 hours to our programming. A significant portion of these hours were dedicated to our Adaptive Ski and Snowboard Program,



where volunteers provided invaluable, hands-on support to our participants and instructors. Summer volunteer opportunities continue to grow with our adaptive cycling program and on-site maintenance days.

Each year we honor one amazing volunteer with BOEC's Volunteer of the Year Award, a challenging choice made from so many dedicated and generous individuals! The Volunteer of the Year in 2021-22 was given to Emily Arnow who dedicated 600 hours across 75 days to the Adaptive Ski and Snowboard Program. Emily also regularly treated staff, interns and fellow volunteers to her talented baking skills, bringing in homemade cupcakes on a regular basis.

We are deeply grateful for our volunteers' commitment and generosity, which has been essential to the success of our programs and the positive experiences of those we serve.

---

*"I absolutely love being in the mountains and sliding down them in whichever way, volunteering with the BOEC allows me to share this passion with other people and help them experience the same joy."*

—BOEC Winter Volunteer

---

## DEVELOPMENT AND MARKETING

We are proud to announce that revenue from development and marketing channels has experienced an impressive 87% increase over the past three years. This remarkable growth is attributed to our committed donor community, a devoted board of directors, and our talented and hardworking staff. In 2022, we expanded our development team by bringing a Development Coordinator on board, further enhancing our fundraising efforts.

Throughout the 2021-22 fiscal year, 827 generous supporters joined forces to help us achieve \$2.1 million in fundraising revenue. Our diversified portfolio of donations came from corporate, foundation, and government partners, as well as individual donors, with contributions ranging from \$5 to \$250,000.

BOEC special events, including The Banff Mountain Film Festival, Fiesta for BOEC hosted by Mi Casa Mexican Restaurant & Cantina, and the Tee It Up Golf Scramble, all witnessed increased success raising over \$205,000. We would like to extend our heartfelt gratitude to all of our event sponsors and in-kind contributors who donated goods and services for our auctions.

We were also fortunate to receive incredible support from dedicated local business partners who underwrote the newest BOEC Adaptive Ski and Snowboard uniforms. Our jacket sponsors include FirstBank as the tail sponsor and Centura Health, Rockridge Building & Construction, and Blue River Sports/Mountain Wave as sleeve sponsors.

Corporate contributions continued to grow, reaching multi-million dollar valuations. We are immensely

grateful for the unwavering support of our Key Partners, who contribute over \$50,000 annually in in-kind services and cash donations. We would also like to recognize our Circle of Support Partners, who contribute at least \$10,000 annually to sustain BOEC operations.

---

### BOEC STAFF\*

#### ADMINISTRATION

**SONYA NORRIS**  
Executive Director

**KAREN SKRUCH**  
Finance Director

**MELISSA KUWAHARA**  
Office Manager

#### DEVELOPMENT

**HALLIE JAEGER**  
Development Director

**PAULI NOVAK**  
Marketing Manager

**ELLEN MCALEESE**  
Development Coordinator

**JONATHAN HAMMERSTEIN**  
Events Coordinator

#### WILDERNESS PROGRAM

**JAIME OVERMYER**  
Program Director

**CLAIRE DICOLA**  
Admissions Director

**STEVEN RUBIN**  
Program Manager

**NICK MELOTTE**  
Facilities and Capital  
Manager

**JILLIAN PALACIO**  
Training Manager

#### ADAPTIVE SKI AND SNOWBOARD PROGRAM

**JEFF INOUE**  
Program Director

**SEAN HOUSTON**  
Assistant Director

**KATIE O'DONNELL**  
Office Coordinator

**GARDNER POPP**  
Volunteer Coordinator

**LYDIA NORTH**  
Operations Manager

**LINDSAY RIGGS**  
Program Supervisor

**MALIA MICHEL**  
Program Coordinator

**AUSTIN BROCKLEY**  
Program Supervisor

#### INTERNSHIP PROGRAM

**KAT BOOTH**  
Internship Program  
Manager

\*As of date of publication, March 2023

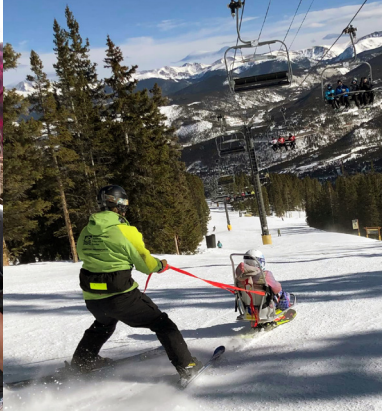
---

*"BOEC hits on all of the points we feel are important to us, as they work to give people a different perspective on life. It creates that with not just the individuals who participate but also the families, as they get to see their loved ones flourish and gain confidence. The volunteers find new joy in their lives by just being involved in such a giving environment. We can't think of a better way to share our resources."*

—BOEC Donor

---





## Contributions

We thank all of our donors for their support during the fiscal year October 1, 2021 through September 30, 2022. Please notify us of any errors or if you would like to be listed differently in the future. Donors are listed in alphabetical order and does not include our donors which wish to remain anonymous.

### INDIVIDUALS

Steve and Suzanne Acker  
Meredith Adams  
Ron and Christina Adams  
Steve Adelman and Katherine Elsner  
Nicholas Adler  
Neil Aggarwal  
Diane Ahern  
Edward Ahlstrand  
Robin Albert  
Jim and Pam Albracht  
Nick Alexander  
Wendi Alexander  
Roger and Elizabeth Alliman  
Dara Altshuler  
Douglas and Kim Alvine  
Mary Anderson  
Jim and Amy Anderson  
Nancy Antunez Schaffer  
Olin and Asa Armstrong  
David and Wendy Aro  
Bob and Amy Arzbaeher  
James Asturias  
Ronald Ayers  
Allan and Carol Bach  
Allen Bacher  
Brownell Bailey  
Charles Baldwin  
Leslee Balten

Brad and Jen Baltz  
William and Patricia Baltz  
Andy and Kelly Banas  
Penny Banks  
Jane Barber  
William and Rhoda Barr  
Merlin and Tracy Bartels  
Barbara Barton  
Kim and Rosie Batcheller  
William and Morgan Bate  
Dann Bearson  
Nichelle Becker  
Howard Bellowe  
Ron and Robin Benko  
J.P. and Kristen Bennett  
Linda Benthin  
Karl and Kim Bentley  
Craig Berkley and Gail Daly-Berkley  
Eric Berman  
Bruce and Rebecca Bernstein  
Andrea Beth  
Jeb Bisset  
Paul and Patricia Bisset  
Barbara Block  
Rochelle Block  
Karen Blumenstein  
Nick Borovich  
Eddie and Patti Bowers  
Jeffrey Bowman  
John Brett

Doug Briggs  
Bob and Chris Briggs  
Corey Brink  
Sheila Brockmeier  
Ellen Brodhun  
Jean Brookbanks-Smith  
John and Marilyn Broughton  
James and Alice Brouhard  
Dennis Brown  
Mark Brown  
Steve Brown  
Todd Brown  
Phil and Janelle Brown  
Allison Bryant  
Peter Buckwalter  
John and Kerry Buhler  
Barbara Burgeson  
Nancy Burnham  
Dale and Patricia Butler  
Sara Cady  
Silvio Calabi and Sue Bramhall  
Elke and Jim Callanan  
James and Barbara Calvin  
Chris Campbell  
Timothy Campbell  
Pat Campbell and Nick Smith  
Bruce Camping  
Leslie Cancilla  
Chris and Eleanor Cares  
William Carle

Peter Carlson  
Dennis and Diane Carney  
Tony and Mary Carosa  
Claire Carren  
Tim Casey  
Andrew Catron  
Chris and Jennifer Cawley  
Teg and Andrea Chaffee  
Nicole Chalfant  
Joe and Ann Chamberlain  
Tracey and Rita Chancellor  
Nicole Chandler  
Jim and Julie Chandler  
Lee and Lee Chandler  
Petros Chapanos  
Barry and Daria Chesnut  
Beverly Chipman  
Sung-Eun Choi and Erik Hendriks  
Carl and Janeene Chrisbacher  
Barry and Jody Church  
Mike Clark  
William and Sandra Clark  
Mark and Tamera Clark  
Robert and Marion Closter  
Chase and Susan Coale  
Josh Cobert  
Arlene Cohen  
Debra Cohn  
Faith Cole  
Rick and Barbara Cole







Elaine Collins  
Cassie Comeau  
Barbara Cooley  
Jeff Cooper  
Steve Corneillier  
Dan and Barb Corwin  
Bob and Dana Cottrell  
Beth Craig  
Kevin and Kristen Crane  
Rod and Regina Crane  
Sharon Crawford  
Larry and Janet Crispell  
Deb Crook and Turk Montepare  
Mark Daley  
Lawrence and Melba Daniel  
Chris and Cheryl Dart  
Douglas and Heather Davis  
Blake and Toni Davis  
Gene and Therese Dayton  
Charles Dayton and Sara Evans  
John and Kelly De Csepel  
Dave and Eli Depeters  
Rolf Dercum  
Suzanne Derelioglu  
John and Carolyn Devine  
Ruthann Dicembrino  
Thomas and Karen Dickey  
Sam DiCola  
Daniel and Juile Dobler  
Zachary and Abbey Dobrota  
Shawn and Steph Doherty  
Robert and Tracy Dollars  
Scot Donato  
Michael Dorsey  
Dennis, Doyle and Rena Anawalt  
Paul and Alicia Dreyer

David and Anne Dross  
Wally and Maggie Ducayet  
Michael Dupre'  
Sarah Durante  
David and Mary Durham  
George Eddy and Kristiana Nation  
Blain England  
Eric Erslev  
Ethan Estey  
Ari Ettinger  
Annie Evans  
Michelle Evans  
Kim Eytel  
Matt Farley  
Nancy Fegley and Steve Williams  
Norman and Margery Fillinger  
John and Sarah Finn  
Bruce Fitch and Gini Bradley  
Beret Fitzgerald  
Timothy Flatley  
Whitney Flynn  
Jim and Ann Foil  
Daniel Folta  
Jackie Foote  
Ted Ford  
Stacy Forest  
Sarah Forti  
Wilson Francis  
Joe and Anne Frank  
Sam and Kathy Frazer  
Mark Freeley  
Tom and Babs Freeley  
Alan and Jean Friedberg  
Rondi and David Frieder  
Tom and Linda Fritz  
Gary and Sue Fruland

Tom and Sally Fry  
Claire Gaeckle  
Megan Galbreath  
Wayne and Peggy Galvani  
Gene and Lisa Gamber  
Brian and Donna Gammenthaler  
Mario Garcia  
Kim and BJ Garcia  
Darrell and Darlene Gardner  
Kevin and Donna Gardner  
Jane and Ken Gardner  
Adam and Nan Gatewood  
Maryann Gaug  
Denny and Patti Geer  
Alex Gelb  
Rachel and Tim Gerken  
Michael Geurink  
Phil and Barbara Gibbs  
Dan and Johanna Gibbs  
Carol Gildea  
Bill and Susy Gillilan  
Paula Gilroy  
Frederic Girardeau-Montaut  
Robert Girvin  
Sherman Glass  
Karl and Kathleen Gleiss  
Tommy and Shawna Gogolen  
Jill Goldenziel  
David Golub and Kathryn Emmett  
Jose Gonzalez  
Thomas Goodloe  
Melissa Gorchynsky  
Thomas Gottsegen  
Pia Goulding  
Bettie Greenberg and Gary Clar  
Suzanne Greene

Julie Greenwood  
Nicole Greenwood  
Susan Greenwood  
Mark Greer  
Bob and Leslie Gregory  
Larry and Gail Griffin  
Lorraine Griner  
Susie and Rick Grossman  
Ralf Guldemeister  
Elizabeth Gunnufson  
Alison Hagan  
Bob and Kristina Halstead  
Andrew and Sarah Halstead  
Rayna Halzel  
Linda Hammond  
Ryan Hansen  
David Harkness  
Angela Harmon  
Annie and Tony Harris  
Jason and Megan Hart  
Megan Hatta  
Priscilla Hawkinson  
Clark and Ruth Hawthorth  
Peter and Shannon Haynes  
Janet Hays  
Rachael Heade  
Joe Healey  
Howard and Victoria Hendrix  
Mike and Jeanne Henry  
Julia Hernandez  
Harold Herring and Lee Stevens  
Helen Hertzog-Mang  
Ben and Holly Hickman  
Debbie and David Hickman  
Meghan Higgins  
Jerry and Debbie Hightower







Tom and Gigi Hillyer  
 Brian and Terese Hiram  
 Joe and Robyn Hodas  
 Katherine Hoekstra  
 Steve and Vicki Holcomb  
 Sandy Horrocks  
 Robert Hoskins  
 Tod and Mary Caroline Hunt  
 Darryl and Kathy Hurst  
 Steve and Chryse Hutchins  
 Doug Huxley  
 Jeff Inouye  
 Sergei and Svetlana Ivanov  
 Katie Jack  
 Hallie Jaeger  
 Scott Jaeger  
 Michael and Cathy Jaeger  
 Steven and Diane Jaffee  
 William Jensen  
 Keith and Elizabeth Jensen  
 Mary Johns  
 Adam Johnson  
 Becky Johnson  
 Kim Johnson  
 Mary Johnson  
 Phyllis Johnstone  
 Stacie Jones  
 Joe and Eileen Jonikas  
 Andy Jordan  
 Thomas and Maggie Jordan  
 Krysten Joyce  
 Pete and Stacy Joyce  
 Sandra Jozefowski  
 David, Julie and Bethany Smith  
 Karen Kaminski  
 Steven Kapiloff

Paula Katsoulis  
 David and Leslie Katz  
 Brenda Kaufman  
 Al Kaye  
 Michael Keeling  
 Tim and Grace Keeling  
 Thom and Jen Keeling  
 Jim and Pam Keeling  
 Joe and Chong Keenan  
 Chris Kelley  
 Katherine Kelly  
 Andrew Kendrot  
 Tom Kerlee  
 John Kim  
 Emily Kimmel  
 Jacqueline Kinney  
 Bill and Barbara Kiser  
 Deborah Klein  
 Tracy Klein  
 Milton and Gail Klein  
 Jenn Klemperer  
 Melvin Kline  
 Angela Knightley and Kent Walker  
 Brendan Koning  
 David Korpel  
 Matt and Cindi Krane  
 Brad and Julie Kreutz  
 Kaylyn Krummen  
 Mike and Kay Kullas  
 Justin and Dani Kupperman  
 Andy and Anne Lacelle  
 Phil and Janice Lacoste  
 Larry Landry  
 Kendra Langlinais  
 Chris Lankhorst  
 Judi Lapinsohn

Steve and Susan Lapinsohn  
 Constance Larrabee  
 Steve and Pat Larson  
 Hilary Law  
 Ted and Jean Lawson  
 Kenn Lee  
 Nancy Lee and Michael Joyce  
 Jeff and Sherri Leigh  
 Peter and Barbara Lemis  
 Judith Lemm  
 John and Eva Leon  
 Scott Levine  
 Bill and Ann Levis  
 Todd and Julie Levy  
 Connie Lewis  
 Whitney Lewis  
 Carol Lewis and Wesley Allanbrook  
 Steven and Katharine Lindauer  
 Bruce and Alisha Lindsey  
 Chris List  
 Joan Little  
 Liam and Ann Logan  
 Jerome and Lynn Lohmann  
 Scott Long  
 Joanna and Bill Lowther  
 Gary and Elise Lubell  
 Peter Lubin  
 Kitty Luchte  
 Gordon and Judith Lundquist  
 Emily Lutke  
 Nichole Lutz  
 Sylvia Luyten  
 Robin Macausland  
 C.J. MacBeth  
 Brian Madden  
 Peter and Jody Madler

Scott and Jan Magnuson  
 Karen Mahakian  
 Michael Manning  
 Martin Margulies  
 Melanie Marmorstein  
 Gary Martinez  
 Frank Martinez and Tadari Ahles  
 Greg and Carol Martino  
 Mike and Barbara Mazurek  
 Ellen McAleese  
 Martha McCann  
 Tamara McClelland  
 Margaret McClure  
 Paul McConnellogue  
 Kim and Lee McGahey  
 Kathleen McGovern  
 Cathy McGown  
 Kirsten McGregor  
 Toril McGuigan  
 Patric McLaughlin  
 Brady and Alexia McMillan  
 Shawn McQuerry  
 Chris and Donna McShea  
 Jim and Laura Mena  
 Jerry and Diana Merrell  
 Glenn Merry  
 Nina Michel  
 Ken Migaki  
 Diane and Dwight Mikulis  
 Erroll Miller  
 Rich and Carolyn Miller  
 Todd and Cindy Miller  
 Michael and Coreen Miller  
 Cornelius Milmoie  
 Gordon Montney  
 Bill and Bonney Moody







Ryan Moran  
Vernon and Judy Morgan  
John and Donna Mortensen  
Cliff and Carol Mowery  
Lawrence Muenz  
Amy Muller  
Michael and Dayna Murphy  
Kevin and Margaret Murphy  
Raule Nemer and Bob Topp  
Rob and Deborah Neyland  
Debbie Niemann  
Mark and Cheryl Nilsson  
Mary Jo Nordin  
Sonya Norris and Mark Burgeson  
Peter and Susana Novembre  
Ilya Nudelman  
Svetlana Nudelman  
Michael O'Herron  
Jack and Pam O'Neil  
Katie O'Neil-Jones  
David and Jamie Oeltjen  
William and Karin O'Halloran  
Charles and Betty Oldanie  
Glenn and Patricia Oldenburg  
Raymond Ollett  
Mark and Gretchen Olmsted  
Betsy and Bruce Olson  
Devon and Larissa O'Neil  
Richard Otterberg  
Reed and Kelly Owens  
Carol Padlick  
Mark and Daphne Pals  
John Parke  
James Parker  
Barbara Payne  
Butch and Sally Peel

Nancy and Rich Pelletier  
Craig Perrinjaquet  
John and Cathy Pershing  
Jen, Pete, and Ella Meltzer  
William Phillips  
Yves and Cary Piecoup  
Russell Pochop  
Joseph and Julia Polise  
Richard Pollock  
Kingsley and Angela Poon  
Fred and Linda Port  
Joanna Pratt  
Bruce and Sally Queen  
Jim Rae  
Peter and Donna Raich  
Kathy Ramert Okeefe  
Carla Randall  
Jeremy Randol  
George and Phyllis Raynor  
Phil and Donna Reinsch  
William and Susan Repphun  
Gabija Revis  
David and Lena Rice  
Mark Rielly  
Tracey Roach  
Sandy Roberts  
Frank Roberts and Erin Hogan  
Richard Robertson and Sonja De Herdt  
Charlotte Robinson-Pritchard  
Mark and Nicole Romasanta  
Steve and Laura Rossetter  
Thomas Rouen  
Brock and Jennie Rounds  
Peter Rubin  
Terry and Debbie Ruckriegle  
Jeffery and Pamela Rush

Kari Rutan  
Lee and Kristin Ryder  
Lynn Rys  
Carol Saade  
Dan Sack  
Jack and Janet Sage  
Jim and Dianne Sample  
Lou Anne Sanchez  
Charles Sanders  
Gregg Saunders  
Alison Scaia  
Adam and Ali Scarr  
Bill Schantz and Carol Bacon-Schantz  
D.J. and Jen Schappert  
Ryan Schlenker  
Eric Scholz  
Chuck Schultz  
Nancy Schwartz  
Michael and Ksusha Shambarger  
Evan Shaw  
Richard Sheldrake  
Nathaniel and Lisa Sher  
John and Jean Sherman  
Truman Shoaff  
Larry Shoe  
Mark Short  
Aaron Shriner  
Jennifer Sicard  
Tara Sieber  
Scott and Susan Sims  
Margie Sinton  
Jim and Jeanne Sloan  
Gurney and Lisa Sloan  
Dave Smith  
Michael Smith  
Tracy Smith

Jay and Helen Smith  
Dan and Laurie Smith  
David and Patricia Smith  
James and Maree Sneed  
Scott and Deborah Sodergren  
Brian Solganick  
Howard and Cindy Solganick  
Marc Soloway  
Aris and Suzanne Sophocles  
Chris Sorensen  
Brian and Kasi Southard  
Pat Spitzmiller  
Bob and Carolyn Springer  
Mark and Jenny Stafford  
Suzanne Standring  
Charles and Jean Staunton  
Ellie Stern  
Andrew Stevens  
Mel and Carolyn Stjernholm  
Jackie and David Stoffel  
Brad and Katharine Stoffer  
Nancy Stoudt  
Allen and Patty Stretton  
Kay Sullins  
Mickey Sullivan  
Robert Sussman  
Brick Sweet  
Erick Sweet  
Barbara Swider  
Mike and Barb Tabb  
Joshua Tawson  
Kamila Taylor  
Wendy Taylor  
Brad and Deanya Taylor  
John and Pat Taylor  
Chris and Lorraine Tennal







Robin and Patty Theobald  
 Nathanael and Ramona Thompson  
 Joyce Thurmer  
 Collier and Bea Tillman  
 James Townsley  
 Debbie and Ralph Trevino  
 Jim and Marty Trisler  
 Russ and Janey Trowbridge  
 David and Judy Truman  
 Ralph and Laurie Tullier  
 Kim Turner  
 Jennifer Tuteur  
 Harold and Debbie Tyber  
 Janet Ulrey and Carl Richter  
 Ted and Linda Upstill  
 Carol Vagnini  
 Tamara Valdez  
 Carly Van Dox  
 Raymond Van Wagener  
 Christopher Vance  
 Gregory and Kathleen VanWieren  
 Ryan and Sarah Velasco  
 Jim Vogel  
 Robert and Sharon Vondrak  
 Erin Wade  
 Margot Waitz  
 Guy Walker  
 John and Sheila Walker  
 Shannon and Marc Wallace  
 Charlotte Waller  
 Bob and Molly Walsh  
 Michael Walzak  
 David Ward  
 Mark and Marni Warren  
 Rik and Susan Washburn  
 Paul Wehrle

Christine Weldon  
 Eric and Dawn West  
 Phil White  
 Quentin and Betty Wiest  
 Debra Wilken  
 Brian and Katie Williams  
 Clem and Sharon Williams  
 Walt Williams and Liz O'Neal  
 Marty Wilson  
 Mary Winnefeld  
 Matthew and Joya Wolf  
 Bradley and Jennifer Wolfe  
 Jack and Wendy Wolfe  
 Evan and Sondra Wolff  
 Richard and Sara Wrenn  
 Tom Wunderlich  
 Hans and Mary Jane Wurster  
 Joseph and Julie Wysocki  
 Greg and Mona Yasutake  
 Bobby Yates  
 Rob and Sharon Yetter  
 Barbara Young  
 Melissa Zack  
 The Geer Family  
 The Estate of Janet Boone  
 The Poston Family

#### ORGANIZATIONS

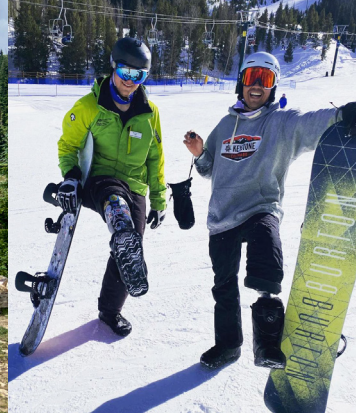
Ahlstrand Family Foundation  
 Alpine Bank\*  
 Amazon Smile  
 Annette and Anthony Albanese Foundation  
 Anschutz Family Foundation  
 Ball Corporation  
 Banff Centre for Arts & Creativity  
 Beckton Dickinson (BD)

Bighorn Rentals  
 Blue River Bistro/ Bistro North  
 Blue River Sports\*  
 Boone and Associates  
 Breckenridge Associates Real Estate  
 Breckenridge Grand Vacations\*  
 Breckenridge Nordic Center  
 Breckenridge Ski Resort\*  
 Carboy Winery  
 Carl and Caroline Swanson Foundation  
 Catt Family Foundation  
 Centura Health - St. Anthony Summit Hospital  
 Chevron Matching Employee Funds  
 Christopher and Dana Reeve Foundation  
 Christy Sports\*  
 Ciancio Ciancio Brown  
 Cisco  
 CoBank  
 Columbine Hills Construction  
 Community First Foundation  
 Continental Divide Winery  
 Copper Mountain Resort\*  
 Cornerstone Real Estate Rocky Mountains\*  
 Creative Cabinetry  
 CTL Thompson, Inc.  
 D'Augustine Foundation  
 Davignon Charitable Fund  
 DaVita Healthcare Partners  
 Denver Children's Foundation  
 Department Of Veterans Affairs  
 Distinctive Woodwork  
 First Nation Group\*  
 FirstBank\*

Foreseeable Future Foundation  
 Google  
 Gravity Haus, Inc.  
 Habitar Design  
 Home and Ranch Properties  
 HP Family Foundation  
 Hyde Engineering + Consulting  
 Hydroflask  
 ifurnish  
 Jacobs Engineering  
 JW Kieckhefer Foundation  
 Karl's Boat Shop  
 Kroger Loyalty Program  
 Land Title Guarantee Company  
 Limber Grove\*  
 Locals Liquors  
 Lord of the Mountain Lutheran Church  
 Luna Lending Services  
 Lundquist Associates, Inc.  
 MaggieGeorge Foundation  
 Margaret T. Morris Foundation  
 Microsoft Matching Gifts Program  
 Mistler Family Foundation  
 Mountain Pride Cleaning and Restoration  
 Nationwide Mutual Insurance Company  
 Nature's Own  
 Nicholas Family Foundation  
 Outside  
 Preferred Marketing Services Inc  
 Prescription Alternatives  
 Project For Good Fund  
 Recycle Sports  
 Reedmtn Family Charitable Fund  
 Robert and Mary Jane Smith Foundation







Rockridge Building Company  
Rocky Mountain Health Foundation  
Rotary Foundation of Summit County  
Roy A. Hunt Foundation  
Roy Family Foundation  
Safeway Foundation  
Shamrock Lawn care  
Shell Oil Company Foundation Matching Gifts  
SKI-IT-AGAIN.COM  
Slifer, Smith & Frampton Foundation  
Swiss Valley Ski Patrol  
The Agape Roasting Project  
The Air Products and Chemicals Foundation  
The Breck Life Group  
The Hartford  
The Logan School  
The Moniker Foundation  
The Summit Foundation  
Town of Breckenridge\*  
Town of Dillon  
Town of Frisco  
Town of Silverthorne  
Vivo Transformations  
West Huntley Gregory Law Firm  
William H. Donner Foundation, Inc.  
Wounded Heroes Family Adventures, Inc.

#### IN-KIND DONORS

10th Mountain Division Hut Association  
African Eyes Travel  
Alpine Sports  
Amy Evans Art  
Arapahoe Basin Ski Area

Atomic Ski USA, Inc.  
AVA Rafting and Zipline  
Avalanche Sports  
Bhava Yoga Studio  
Black River Outfitters  
Blue River Sports\*  
Boone and Associates  
Breck Create  
Breck Ventures  
Breckenridge Film Festival  
Breckenridge Golf Club  
Breckenridge Grand Vacations\*  
Breckenridge History  
Breckenridge Ski Resort\*  
Broken Compass Brewing  
Brown Foreman Breakthru Beverages  
Christi Meril Art  
Christy Sports\*  
Ciancio Ciancio Brown  
Collective Design Group  
Colorado Bath Company  
Colorado Rockies Baseball Club  
Copper Mountain Resort\*  
Country Boy Mine  
David Embry  
David V. Gonzales Art  
Elite Island Resorts  
Eyes on Breckenridge  
Fred Zapp  
Gertrude Young  
Hallie Jaeger  
Hearthstone Restaurant  
Hollow Alpaca  
ifurnish  
Jeff Inouye  
Julia Ordog Photography

Kevin and Karen Skruch  
Keystone Ski Resort\*  
Kim Swamy America Corp  
Krimson Klover  
Kristi Breakthru Beverage Colorado  
Light Lounge Littleton  
Linda Hammond  
Local Liquors  
Loveland Ski Area  
Lululemon  
Mammut  
Margie Sinton  
Meta Yoga Studios  
Mi Casa Restaurant & Cantina\*  
Mountain Beverage  
Mountain Outfitters  
MTNAXE Breckenridge  
Nancy Fegley  
Peak Performance Copier & Supply  
Peak-A-Boo Toys  
Performance Tours Rafting  
Phunkshun Wear  
Precision Ski & Golf  
Robert Kennard  
Silvio Calabi and Sue Bramhall  
Steve Sanborn  
Stingray Worldwide\*  
Storm Enterprises, Inc  
Strange Craft Beer  
Talon Golf  
The Frosted Flamingo  
Timberline Craft Kitchen & Cocktails  
Timberline Disposal and Recycling  
Town of Breckenridge\*  
Town of Frisco  
Town of Silverthorne

University of Colorado Boulder  
Vail Resorts' EpicPromise\*  
Vivo Transformations  
Wines For Humanity  
Zindler's Sports Collectibles

**Special thanks to our Key Corporate Partners who gave \$50,000 or more in the fiscal year and our Circle of Support Corporate Members who gave between \$10,000 and \$49,999 in the fiscal year. Donations include cash, in-kind support and matching gifts.**

#### Key Partners



#### Circle of Support

Alpine Bank  
Christy Sports  
Cornerstone Real Estate  
Rocky Mountains  
FirstBank  
First Nation Group  
Limber Grove  
Mi Casa Mexican Restaurant & Cantina  
Stingray Worldwide





# Financials

Independently audited by Stuhr & Associates, LLC

## Statement of Financial Position, September 30, 2022

*With Comparative Totals for 2021*

	FY 2021-22	FY 2020-21
<b>ASSETS</b>		
Cash and cash equivalents	727,852	830,048
Short-term investments	738,707	116,246
Receivables	102,541	112,401
Prepaid expenses	26,309	26,322
Long-term investments	1,387,322	1,923,990
Property and equipment (net), inventories	1,934,005	1,925,401
<b>Total current assets</b>	<b>4,916,736</b>	<b>4,934,408</b>
<b>LIABILITIES AND NET ASSETS</b>		
Liabilities:		
Accounts payable	81,117	14,689
Note Payable – Paycheck Protection Program		239,486
Deferred revenues		3,955
<b>Total current liabilities</b>	<b>81,117</b>	<b>258,130</b>
Net Assets:		
Unrestricted	3,826,226	3,602,259
Temporarily restricted	570,405	635,031
Permanently restricted	438,988	438,988
<b>Total net assets</b>	<b>4,835,619</b>	<b>4,676,278</b>
<b>TOTAL LIABILITIES AND NET ASSETS</b>	<b>4,916,736</b>	<b>4,934,408</b>



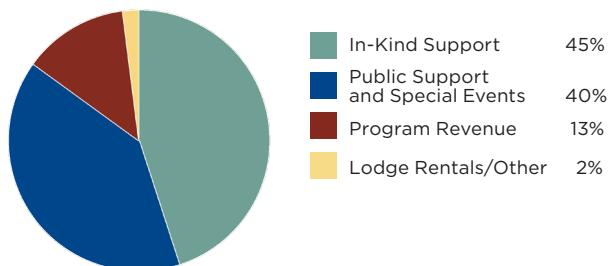
## Statement of Activities and Changes in Net Assets for the Year Ended September 30, 2022

With Summarized Financial information for the Year Ended September 30, 2021

	Unrestricted	Restricted 2021-22	FY 2021-22 TOTAL	FY 2020-21 TOTAL
<b>PROGRAM AND SUPPORT REVENUE</b>				
Public Support:				
Contributions, donations and grants	1,436,491	602,350	2,038,841	1,371,717
Program Revenue:				
Tuition	766,605		766,605	494,833
Less scholarships and discounts	(183,585)		(183,585)	(140,898)
Net tuition	583,020		583,020	353,935
Special Events, net of direct costs	150,559		150,559	93,095
Additional program fees	11,461		11,461	14,885
Lodge Rentals	36,420		36,420	20,800
Program in-kind support	2,029,720		2,029,720	1,936,603
Staff housing and rental income	49,375		49,375	40,887
Misc. income	622		622	5,470
Investment Return	(300,170)	(70,399)	(370,569)	244,022
Net assets released from restrictions	596,577	(596,577)	0	0
<b>Total revenues, gains and other support</b>	<b>4,594,075</b>	<b>(64,626)</b>	<b>4,529,449</b>	<b>4,081,414</b>
<b>EXPENSES</b>				
Program services	3,512,808		3,512,808	2,939,670
Administration	363,185		363,185	367,111
Fundraising	291,888		291,888	210,412
Depreciation	202,227		202,227	186,272
<b>Total expenses</b>	<b>4,370,108</b>		<b>4,370,108</b>	<b>3,703,465</b>
<b>Change in net assets</b>	<b>223,967</b>	<b>(64,626)</b>	<b>159,341</b>	<b>377,949</b>
Net assets as of beginning of the year	3,602,259	1,074,019	4,676,278	4,298,329
Net assets as of end of the year	3,826,226	1,009,393	4,835,619	4,676,278

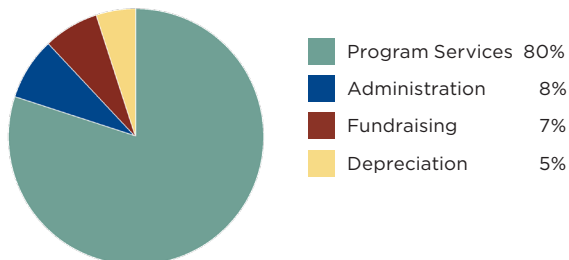
### Revenues FY 2021-22

\$4,529,449



### Expenses FY 2021-22

\$4,370,108







*"I just have to say how thankful we are to have been able to attend this course on the river. The staff was amazing and made this amazing trip even better. We couldn't have asked for a better experience. Thank you all."*

— Heroic Families-Ruby Horsethief Wilderness Program Participant



**Breckenridge  
Outdoor  
Education  
Center**



P.O. Box 697 • Breckenridge, CO 80424  
(800) 383-2632 • (970) 453-6422 • fax (970) 453-4676

[www.boec.org](http://www.boec.org)

## Thank You Key Partners



BOEC is an equal opportunity service provider and employer. BOEC operates under special use permits from the USDA Forest Service and White River National Forest.

All or part of this operation is conducted on Public Lands under special permits from the U.S. Bureau of Land Management.

©2023 Breckenridge Outdoor Education Center.