

Annual Report 2020-21



**Breckenridge
Outdoor
Education
Center**



BOARD OF DIRECTORS

Bill Gillilan, *Chair, Centex Corp, CEO (Retired), Breckenridge, CO **

Barb Rankin, *Vice-Chair, Cornerstone Real Estate Rocky Mountains (Owner), Breckenridge, CO **

Dr. Aris Sophocles, *Treasurer, Family Care Medical Center (Owner/Retired), Denver, CO **

Leslee Balten, *Secretary, Ciancio Ciancio Brown, P.C. (Attorney/Partner), Breckenridge, CO **

Kristen Bennett, *Alzheimer's Association Region 4 (Finance Manager), Denver, CO*

John Buhler, *Breckenridge Ski Resort (VP & COO), Breckenridge, CO*

Tim Casey, *Mountain Marketing Associates (Owner), Breckenridge, CO **

Gene Dayton, *Breckenridge Nordic Center (Owner), Breckenridge, CO*

Mike Dudick, *Breckenridge Grand Vacations (Co-Owner/CEO), Breckenridge, CO*

Robert Gregory, *West Brown Huntley, P.C. (Attorney), Breckenridge, CO*

Ted Lawson, *Southwest Airlines (Senior Pilot/Retired), Breckenridge, CO **

Braden McMillan, *FirstBank (Sr. Vice President), Breckenridge, CO*

Reed Owens, *5th Judicial District (District Court Judge), Breckenridge, CO*

Gurney Sloan, *Membership Marketing Partners, LLC (CEO/Retired), Colorado Springs/Frisco, CO **

Erik Taylor, *Arrow Electronics, Inc. (Senior Manager), Denver, CO*

Debbie Trevino, *Summit 2nd Homes (Owner), Silverthorne, CO **

* Indicates Executive Committee

A Letter from our Executive Director and Chairman of the Board

A Letter from our Executive Director

Thank you for taking the time to review BOEC's 2020-2021 Annual Report. Throughout this past year, we've remained focused on protecting what has been built over the years by you and many others. You are the force behind BOEC's success by volunteering, giving, supporting, and simply by being a friend.

As you read through these pages, you'll see an organization that's financially secure, forward-thinking, and constantly searching for innovative ways to serve our adaptive sports community. You'll see the story of a dedicated staff that's the best in the business, sets the highest client service standards, and stewards every dollar to maintain our Guidestar Platinum rating.

You'll see the story of an organization that shined during Covid, adapting and delivering in the face of policy shifts, mandates, and unexpected service needs of those suffering from isolation. You'll see that we brought back clients to our mountains, rivers, and ropes courses as fast and as safely as possible. You'll see photos of our great big adaptive sports family and read testimonials about how we helped our clients achieve their goals and dreams.

You'll see the hard work of a dedicated leadership


team that has few peers in the non-profit world. This year, we celebrated the term ends of three beloved, long-time board members Tim Casey, Bill Gillilan, and Ted Lawson. To have such a committed group of individuals who generously give their time, wisdom, and wealth is a true blessing. While saying goodbye is never easy, we are fortunate to welcome three talented new board members: Dr. Erin Beckerman, Jen Schappert, and Jody Church.

Most of all, when you read our annual report, you'll see a reflection of your faith in us. We cherish your friendship and strive to live up to your expectations as one of our nation's leading adaptive sports organizations. In that spirit, if you have an idea or concern, or just want to learn more about BOEC, please reach out. I'd love to hear from you.

Again, thank you for all that you make possible through your generous support of BOEC.



With Warm Wishes,



SONYA NORRIS
Executive Director

A Letter from our Chairman of the Board

Ten years ago, Tim Casey, then Chair of the Board of BOEC, invited me to join him for lunch to learn more about the organization. Little by little as I grew to know and understand the BOEC community; its leaders including several BOEC founders, its staff, its donors, its volunteers and, most importantly, its clientele, I became captured by the value of its mission to those for whom the BOEC provides outdoor experiences and adventures. It has been my honor to serve on the BOEC board since 2011, Finance Committee Chair, Vice Chair and as Chair of the Board since 2020.

I have seen the BOEC team led by Executive Director, Sonya Norris, successfully fulfill its mission in an ever changing and challenging environment. Each team member, driven by the BOEC mission, mentors and supports their teammates and every participant. Together the team continually becomes more creative, thorough and solution driven.

In October of 2021, my wife, Susy, and I relocated to Connecticut after twenty-six years in Summit County, and we sincerely miss the people of the BOEC community and always will. I am confident that the

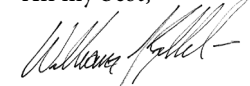
BOEC will continue to thrive under the leadership of its newly elected Chair, Barb Rankin. Barb has served on each of the Board committees, as Vice Chair and has volunteered in the ski program for a number of years.

I thank the entire BOEC community for your continued generosity which has kept the BOEC financially sound and offer a special thank you to the Town of Breckenridge, Breckenridge Ski Resort, Keystone Resort, Copper Mountain, Epic Promise, Blue River Sports and Mountain Wave, whose support is essential to the success of BOEC's adaptive programs.

Lastly, I thank each member of the BOEC Board of Directors for your leadership and willingness to step up to meet any challenge when your wisdom and experience are called upon to keep the BOEC foundation resilient and strong. I will always be watching your future success.



All my best,



BILL GILLILAN
Chairman of the Board (2019-2021)

The Year in Highlights

The following highlights our major accomplishments from this past fiscal year.

PROGRAMS

ADAPTIVE SKI AND SNOWBOARD PROGRAM

BOEC's 2020-21 Adaptive Ski and Snowboard Program, located at Breckenridge, Keystone, and Copper Mountain Ski Resorts, returned to some sense of normalcy after being forced to shut down six weeks early due to the COVID-19 pandemic in the Spring of 2020. In winter 2020-21, the program resumed adaptive lessons at 50% capacity while implementing stringent health and safety protocols in order to stay open, serving 633 total participants across 1,686 program days. While we only served half of those we would see in a "normal" year, we are very proud to have completed the season without any serious incidents or health issues among staff, participants or volunteers.

Individuals with a wide array of disabilities and special needs returned to BOEC to participate in the Adaptive Ski and Snowboard Program coming from across Colorado (61%) and the United States (39%) to experience the life-changing effects of adaptive skiing and snowboarding through BOEC's world-class program.

With the programming running at half capacity due to COVID-19 and given travel restrictions, many group participants that come to BOEC year after year decided to take the season off. Those groups who did return accounted for 255 of the 1,686 lessons, including longtime partners such as Evergreen Parks & Recreation, Summit Middle School, Summit High School, Emily Griffith Center, Snow Sports Alliance, and Wounded Warrior Project. Of the 78 programming days at Copper Mountain, BOEC welcomed members of the U.S. Paralympic Sled Hockey Team.

Thanks to generous contributors, we were able to add two new sit-skis to our fleet of adaptive equipment to better serve our population in need of these important tools.

WILDERNESS PROGRAM

After BOEC's year-round Wilderness Program was forced to cancel its 2020 summer offerings for the first time in the history of the organization, programming returned in a restricted capacity in the winter of 2020 and summer of 2021. The program re-opened for overnight programs, residential courses, and expanded local day programs; all with enhanced risk management protocols to ensure participant and staff wellbeing. Despite facing another challenging year, we are truly proud to have served 762

"I cannot thank BOEC enough for giving my daughter the freedom she had today. Abby is a spastic quadriplegic with cerebral palsy. She is completely wheelchair dependent but today she was able to soar over the slopes with a freedom she has never felt. She made such amazing memories skiing side-by-side with her sisters. I can't thank you enough. She's already looking forward to next year!"

—Mother of Adaptive Ski & Snowboard Program Participant

participants across 2,655 programming days over the 2020-21 fiscal year.

The return of in-person programming opened the doors for long-time groups to return while adding a few new events to the Wilderness Program slate. Returning groups included the Brain Injury Alliance of Colorado, BreckWild Wilderness Medicine course from the Sydney Kimmel Medical School, Children's Hospital Colorado, The Challenge Foundation, Horizons Academy, Mind's Eye Travel, and Vail Mountain School. This past year, BOEC's open-enrollment camps included the brand new week-long day camp, Paddfest, two weeks of Camp Big Tree, and one week of Wilderness Camp. These programs serve youth, ages 12-21, with a wide range of special needs who enjoy activities including canoeing, rafting, kayaking, paddle boarding, rock climbing, ropes course, camping, and hiking.

The Wilderness Program also partnered with local agencies, including Summit County Youth and Family Services, providing four series of single-day events for the Boy's Summer Outdoor Adventure Program (SOAP) and the local Summit County Teen Center. We continued to partner with Building Hope Summit County and added a new week-long day program with Summit Middle School Pre-Collegiate. These programs offered specialized activities including ropes course sessions, rock climbing, community service, and boating days for local teens and families dealing with social isolation and other challenges.

Thanks to our generous donors, we were able to purchase new equipment that not only bolstered our gear setups for programs but helped us to maintain our commitment to safety protocols. This included new camp chairs, upgrades to much of our rafting gear, and the replacement of climbing equipment in order to adhere to our strict policy on inspection and retirement procedures. We secured a new supply of tents so that more individuals could sleep separately on overnight trips, obtained several

“BOEC has played a huge part in Kara’s life. Challenge by Choice has added to the inner strength she has. I did Outward Bound and National Outdoor Leadership School many years ago and I know how those experiences gave me incredible inner strength. I am forever grateful to all of you at the BOEC for all that you do!”

—Mother of BOEC Wilderness Program Participant

more mobile handwashing stations, and acquired new sets of snowshoes and hiking poles so that we could keep people active in the great outdoors. The program also added a much-needed, brand-new all-wheel-drive 15 passenger van to help get our participants out and about. The all-wheel-drive feature is a crucial component, allowing us to get to some of our remote wilderness areas and tackle the winter driving conditions of the Rocky Mountain West. Additionally, a heavy-duty raft trailer was secured which can withstand the immense amount of gear we pack on it during the summer trips.

In a key staffing role, we added a training manager who will focus on the intensive training and education needed by staff to facilitate BOEC hands-on programs. Capital improvements included replacing the aging roof on the 40-year-old intern cabin, remodeling the fishing dock on the 10-acre Sawmill Reservoir, and with considerable help from local contractors and volunteers, replacing the aging deck on the Scott Griffith Lodge where many of our summer and winter Wilderness Programs take place.

HEROIC MILITARY PROGRAM

BOEC’s year-round Heroic Military Program, open to veterans, active-duty military, and members of the Guard and Reserve, provides programs and events designed to bring families together and help America’s veterans with their recovery and healing process. Additionally, this program provides a platform for these individuals to find connections with other veterans dealing with similar circumstances. We are proud to offer both summer and winter events at low or no cost to active military members and veterans from all over the United States.

Typically, during the winter months, the BOEC provides alpine skiing and snowboarding at Breckenridge, Keystone, and Copper Mountain Ski Resorts, and snowshoeing/Nordic ski lessons at the Breckenridge and Frisco Nordic Centers. Unfortunately, due to the pandemic and restricted travel by the Veterans Administration, all winter military camps and programs were canceled during the 2020-21 fiscal year. We were still, however, able to provide ski and snowboard lessons to 23 veterans overall.

The summer months normally offer a variety of trips and camps, including mountain retreats, river trips, and family retreats that feature exhilarating adventure-based

activities. Despite the restricted programming, we were able to offer four multi-day river trips during the summer of 2021 for 33 of America’s veterans. One family retreat, one camp for both men and women, and two women’s only river trips took place. These trips included one on the San Juan River offered in partnership with Telluride Adaptive Sports Center (TASP) and three other trips down Ruby Horsethief and Westwater Canyons.

INTERNSHIP PROGRAM

After the cancellation of the summer 2020 Internship Program for the first time in the 46-year history of the organization, this past fiscal year the BOEC continued its strong tradition, albeit on a more modest scale, with the training of young professionals interested in the fields of Outdoor/Experiential Education, Therapeutic Recreation, and Recreation Management. We welcomed back the year-round Internship Program at half capacity with nine winter interns and nine summer interns to help keep things safe during the pandemic. The program continues to be an important component of BOEC’s overall success, with seven of the nine summer 2021 interns returning as BOEC staff or completing the organization’s 2021-22 Winter Internship.

Both summer and winter interns complete almost a month of training, allowing each to play an active role in all aspects of BOEC programming. This is not your typical sit back and watch internship, however, as BOEC interns play an integral role in the planning and implementing of all types of programming throughout the year.

To date, BOEC has graduated over 1,000 talented individuals, many of whom have gone on to work in the adaptive outdoor education and therapeutic recreation fields in the U.S. and worldwide.

VOLUNTEER PROGRAM

Since the official start of the BOEC in 1976, volunteers have been the cornerstone of what we do and how we do it so well. We couldn’t do it without the enormous amount of time and energy given by the 136 volunteers who donated over 3,900 hours in the 2020-21 fiscal year. While this number is lower than in previous years due to the pandemic, we are continually amazed by the enthusiasm and dedication of this special group.

By far, the most active volunteer base is within the Adaptive Ski and Snowboard Program, where volunteers provide hours of experience and much-needed support to our staff, instructors, and students. In 2020-21, our active volunteer base continued to see an uptick in interest by those wanting to give back during the pandemic. Even with the program running at half capacity, 126 volunteers (24 new to BOEC) completed a total 3,823 on-hill hours and 468 hours of training during the winter months. During the summer, volunteers primarily support the Wilderness Program with adaptive cycling

camps, meal prep, participant support, and wilderness site work projects. BOEC's special events are another place where volunteers give their time and energy back to the organization, supporting the 12th Annual Tee It Up Golf Scramble in the summer of 2021.

The BOEC is extremely thankful for all of its dedicated and enthusiastic volunteers.

FUNDRAISING

During the 2020-21 fiscal year, we not only achieved our fundraising goals but surpassed the million-dollar milestone for the third year in a row thanks to our generous supporters. BOEC's comprehensive fundraising strategy includes working closely with many entities to bring in funding, including our community partners, individual donors, foundations, granting institutions, and corporations.

We are grateful to report that the BOEC donor base continues to grow, reaching a new record of 714 contributors in 2020-21, totaling over \$1.2M in funds

"The trip was truly amazing and unforgettable. The entire experience renewed my soul as I found myself returning bedside to care for critically ill patients with a new sense of hope for the ongoing world surround by Covid. The BOEC staff were professional, skilled, outgoing and just amazing. Thank you BOEC for acknowledging women veterans."

—Heroic Military Women's River Trip Participant

raised, 294 of which donated for the first time. BOEC is humbled by the hundreds of donors who give year after year. We have 97 active donors who have been supporting the BOEC for ten years or more, entering the "Decades of Giving Club." This group alone has brought in over \$2.2M in funds since 1976!

Events were tricky to navigate in 2021, but we had another record-breaking year with event revenue contributing 13% of our total fundraising. The Banff Mountain Film Festival went virtual, and we were lucky to host the 12th Annual Tee It Up Golf Scramble which sold out with 144 golfers and netted \$54K. Thanks to Dick Carleton and his team at Mi Casa Mexican Restaurant & Cantina, the Cinco de Mayo Celebration was re-envisioned into an exclusive high-end dinner called Fiesta for BOEC in June, which netted a whopping \$85K.

We would like to highlight our 2020-21 Key Corporate Partners and our Circle of Support Corporate Partners. BOEC would not exist as it does today without you! In 2020-21, the BOEC Key Partners who contributed \$50K+ annually in financial and in-kind support included the Town of Breckenridge, Keystone Ski Resort, Breckenridge Ski Resort, Vail Resorts' EpicPromise, Blue River Sports,

and Mountain Wave. The Circle of Support Partners, contributing over \$10K annually, included Alpine Bank, Breckenridge Grand Vacations/BGV Gives, Cornerstone Real Estate Rocky Mountains, FirstBank, GE Johnson Construction Company, Mi Casa Mexican Restaurant and Cantina, and Copper Mountain Ski Resort.

Thank you to all of our generous contributors, donors, and partners who support BOEC in so many ways. Please see the list of all donors starting on p. 8.

BOEC STAFF*

ADMINISTRATION

SONYA NORRIS
Executive Director

KAREN SKRUCH
Finance Director

MELISSA KUWAHARA
Office Manager

DEVELOPMENT

BARRY RUBENSTEIN
Marketing & Events
Manager

HALLIE JAEGER
Development Manager

WILDERNESS PROGRAM

JAIME OVERMYER
Program Director

CLAIRE DICOLA
Admissions Director

KYLE CALBAT
Program Manager

STEVEN RUBIN
Program Manager

BEN HICKMAN
Facilities and Capital
Manager

JILLIAN PALACIO
Training Manager

ADAPTIVE SKI AND SNOWBOARD PROGRAM

JEFF INOUE
Program Director

KYLE CALBAT
Program Manager

KATIE O'DONNELL
Office Coordinator

EMMA GILROY
Volunteer Coordinator

LYDIA NORTH
Program Supervisor

SEAN HOUSTON
Keystone Adaptive Center
Coordinator

BLAKE STRETTON
Keystone Adaptive Center
Supervisor

INTERNSHIP PROGRAM

KAT BOOTH
Intern Program
Manager

*As of date of publication, March 2022

"I can't speak more highly of the BOEC team, both in their skill as ski instructors, but also their amazing ability to navigate the challenges that come along with getting a special needs child on mountain to experience all the pleasure and growth that comes from skiing. To give you some context, my daughter has mild CP and a strong aversion to cold, helmets, gloves, ski boots, and the wind. So to say she is not the ideal skier candidate is a massive understatement. The BOEC team seamlessly, patiently, and compassionately navigated the process and successfully got her on a glider, sit-ski and stand-up skis (this last one a truly amazing feat that I did not think was possible)."

—Father of BOEC Adaptive Ski & Snowboard
Program Participant



Contributions

We thank all of our donors and contributors for their support during the fiscal year October 1, 2020 through September 30, 2021. Please notify us of any errors or if you would like to be listed differently in the future. Donors are listed in alphabetical order.

INDIVIDUALS

Terrin Abel
 Steve and Suzanne Acker
 Pamela Ackerman
 Doug and Holley Adcock
 Steve Adelman and Katherine Elsner
 Nick Adler
 Tadari Ahles
 Robin Albert
 Celia Alicata
 Douglas and Kim Alvine
 Mary Anderson
 Jim and Amy Anderson
 Rae Anderson
 Rob Anderson
 Geoffrey Andrews
 William Archuleta
 Kyle Armstrong
 David and Wendy Aro
 Allan and Carol Bach
 Allen Bacher
 Lauren Bader
 Charles Baldwin
 Leslee Balten
 Brad and Jen Baltz
 William and Patricia Baltz
 Penny Banks
 Jane Barber

William and Rhoda Barr
 Mary Barry
 James and Hanna Bartlett
 Margaret Bassett-Schultz
 Kim and Rosie Batcheller
 Dann Bearson
 Nichelle Becker
 Jay and Erin Beckerman
 Liesl Begnaud
 David and Susan Beiner
 Don and Lisa Belanger
 Howard Bellowe
 Ron and Robin Benko
 J.P. and Kristen Bennett
 Jonathan and Elizabeth Benton
 Doug and Carri Berenson
 Brian Birenbach
 Paul and Patricia Bisset
 Chris and Tanya Blevin
 Eddie and Patti Bowers
 Rebecca Bown
 Jeff and Emily Boyd
 James Bradley
 Kelly Brennan
 John Brett
 Denise Briere
 Bob and Chris Briggs
 James and Alice Brouhard
 Dennis Brown

Phil and Janelle Brown
 Doug and Peggy Brown
 Steve Brown
 Mark Brown
 Todd Brown
 Devorah Brumberger
 Steven and Lynn Bruskevige
 Wolfgang Buchmaier
 Amy Budde
 John and Kerry Buhler
 Barbara Burgeson
 Mary Burkart
 Jeffrey Burke
 Nancy Burnham
 Chris Butler
 Barbara Butler
 Dale and Patricia Butler
 Jeffrey Cain
 James and Barbara Calvin
 Paul Camillo
 Pat Campbell and Nick Smith
 Timothy Campbell
 Bruce Camping
 Leslie Cancilla
 Charles Cannon
 Chris and Eleanor Cares
 Dick and Cathy Carleton
 Tony and Mary Carosa
 Sue and Martin Carter

Tim Casey
 Andrew Catron
 Michael Cavanaugh
 Chris and Jen Cawley
 Brendon and Kerri Cechovic
 Nicole Chalfant
 Jim and Julie Chandler
 Anne Marie and Dayton Chapin
 Kerry Charles
 Mark and Sharon Chertok
 Jaycee Chinn and George Quick
 Beverly Chipman
 Scott Chisholm
 Kelli Cholas
 Courtney Christine
 Barry and Jody Church
 Cara Cipriani
 Kathleen Clabby
 Earl Clairmont
 Kimberly Clark
 William and Sandra Clark
 John Clements
 Robert and Marion Closter
 Chase and Susan Coale
 Allen Cochran
 Frederick and Catherine Cole
 Elaine Collins
 Jan Colton
 Jason Cook





Jonathan Cooper
 Dan and Barb Corwin
 Andrew Cove
 Tom Covell and Kathy Clancy
 Kevin and Kristen Crane
 Marc and Mary Crawford
 Sharon Crawford
 Deb Crook and Turk Montepare
 Jerry Crossland
 James Cruizan
 Jim Cunning and Lisa Stone
 Alan Czepinski
 Eric and Shannan Dahman
 Julie Danan
 Lawrence and Melba Daniel
 Jim and Suzanne Davis
 Phil and Sandy Davis
 Blake and Toni Davis
 Mike Dayton and Kate Tsai
 Charles Dayton and Sara Evans
 Gene and Therese Dayton
 John and Kelly De Csepel
 Dave and Eli Depeters
 Rolf Dercum
 Jack and Candace Derickson
 John and Carolyn Devine
 Ruthann Dicembrino
 Cindy Dillenschneider and Jason Maloney
 Daniel and Juile Dobler
 Zachary and Abbey Dobrota
 Shawn and Steph Doherty
 Robert and Tracy Dollars
 Scot Donato
 Jonathan Doty

Shannon Downen
 Paul and Alicia Dreyer
 David and Anne Dross
 Wally and Maggie Ducayet
 Mike and Anna Dudick
 Jeff Dupey
 Khadijah Duprey Ray
 David and Mary Durham
 Robin Duryee
 Nancy Dusak
 John and Linda Ebright
 Deb Edwards
 Candy Emerson
 Blain England
 Ethan Estey
 Vivian Estey
 Ari Ettinger
 Robert and Janet Ettleman
 Jason Euler
 Apostolos and Nancy Evangelidis
 Kim Eytel
 Dave and Julie Falkenstern
 Matthew Farley
 Nancy Fegley and Steve Williams
 Eric Feierstein
 Christopher Ferguson
 Norman and Margery Fillinger
 Edwin Fischer
 Angela Fisher and Jason Bretz
 Bryan Fitzgerald
 Beret Fitzgerald
 Jim and Ann Foil
 Kathryn Foley and Peter Rogos
 Theodore Ford
 Stacy Forest

Karen Fox
 Wilson Francis
 Alan and Jean Friedberg
 Gary and Sue Fruland
 Tom and Sally Fry
 Joe Fulcher
 Tim and Ann Gagen
 Megan Galbreath
 Laurie Galbreath
 Wayne and Peggy Galvani
 Gene and Lisa Gamber
 Brian and Donna Gammenthaler
 Mario Garcia
 Larry and Jennifer Garfield
 Woody and Georgia Garnsey
 George and Bobby Garrison
 Robert Gastorf
 Maryann Gaug
 Jerry and Marge Gavenda
 Jonathan Gear
 Alex Gelb
 Phil and Barbara Gibbs
 Erin Glieliello and Joe Howdysshell
 Bill and Susy Gillilan
 Robert Girvin
 Carol Glaser
 Karl and Kathleen Gleiss
 David Golub and Kathryn Emmett
 Melissa Gorchynsky
 Mariquita Gordon
 Hugh and Jeanne Gottschalk
 Jenni and Cody Gottschalk
 Reggie and Pam Gray
 Sue Greene

Alan and Rita Greene
 Bill and Margie Greer
 Bob and Leslie Gregory
 Clyde Grindell
 Beth Groundwater
 Melissa and George Gruber
 Kate Gueldemeister
 Julia Gulia
 Elizabeth Gunnufson
 Greg Guras
 Alison Hagan
 Kim Haller
 Scott Halpenny
 Bob and Kristina Halstead
 Andrew and Sarah Halstead
 Linda Hammond
 Margaret Hanks
 Ryan Hansen
 Dave Harman
 Annie and Tony Harris
 Janet Hattton
 Clark and Ruth Hawksworth
 Peter and Shannon Haynes
 Keith Heintzelman
 Peggy Henderson
 Howard and Victoria Hendrix
 Steve Hendryx
 Kelly Hepburn
 Gordon Herwig
 Debbie and David Hickman
 Kenneth and Kathleen Hidenfelter
 Jerry and Debbie Hightower
 Timothy Hill
 Tom and Gigi Hillyer





Jacob Hinman
 Brian and Terese Hiram
 Justin Hirshfield
 Susan Hirst
 Lita Hodges
 Katherine Hoekstra
 Grace Holcomb
 Sheila and Roger Hollenbeck
 Stacey Holmes
 Bruce and Donna Horii
 Sandra Horrocks
 Robert Hoskins
 Landon Houghtaling
 Christopher Hudson
 Ryan Huff
 Torrence Hunt
 Felice Huntley
 Darryl and Kathy Hurst
 Sean Huss
 Steve and Chryse Hutchins
 Doug Huxley
 Anissa Ibarra
 Mark and Jamie Idelberg
 Daniel Ingegno
 Katie Jack
 Michael and Cathy Jaeger
 Steven and Diane Jaffee
 Martyn James
 Sharon Jefferson
 Katherine Jeter
 Adam Johnson
 Jim Johnson
 Tracy Johnson
 Ryan Jones
 Elston Jones

Pete and Stacy Joyce
 Krysten Joyce
 Paula Katsoulis
 David and Leslie Katz
 Tim and Grace Keeling
 Michael Keenan
 Roy and Sandy Kelman
 Robert Kennard
 Vincent King
 Bill and Barbara Kiser
 Thomas and Annette Kissinger
 Gail and Milton Klein
 Karl and Kathy Klepfer
 Angela Knightley and Kent Walker
 Lawrence and Marty Koehn
 Monica Koldyke
 Brendan Koning
 Natalie Koonce
 Lorrie Krebs
 John Krueger
 Mike and Kay Kullas
 Michelle Kuo
 Roger and Jill Kurtz
 Glenn Kurtz
 Joseph and Adrian Kuzel
 Andy and Anne Lacelle
 Mike Lagrange
 Todd Lapenta
 Steve and Susan Lapinsohn
 Judi Lapinsohn
 Constance Larrabee
 Ted and Jean Lawson
 Kenn Lee
 Jason Lee
 Jeff and Sherri Leigh

Michael Leightman
 Julia Levere
 Bill and Ann Levis
 Carol Lewis and Wesley Allanbrook
 Connie Lewis
 Toe-knee li
 Frank Lilly
 Katharine Lindauer
 Eric and Judith Lindblad
 Bruce and Alisha Lindsey
 Kelly Lish
 Bob and Joan Little
 Arthur Lock
 Katie Loftus
 Liam and Ann Logan
 Amy and Joe Logue
 Jerome and Lynn Lohmann
 Scott Long
 Gary and Elise Lubell
 David and Emily Lubin
 Pete Lubin
 Gordon and Judith Lundquist
 Nichole Lutz
 Irvin Lutz
 Sylvia Luyten
 Dustin and Kelly Lyman
 Melissa Lyster
 C.J. MacBeth
 Claire MacMurray
 Meghan Macwilliams
 Scott Malling
 Donald Maloy
 Eric and Sara Mamula
 Peggy Manchester

Martin Margulies
 David Markland
 Jeanne Marron
 Charles and Margaret Marshall
 Gary Martinez
 Frank Martinez
 Larissa Martinez
 Greg and Carol Martino
 Sarah Jo Masseria
 Mike and Barbara Mazurek
 Mark McClaskey
 Jim and Bonnie McCol
 Kim and Lee McGahey
 Blair McGary
 Wayne McLaren
 Patric McLaughlin
 Joe and Dorothy McLemore
 Chelsie McManus
 Brady and Alexia McMillan
 James and Laura Mena
 Nina Michel
 Ken Migaki
 Diane and Dwight Mikulis
 Michael and Coreen Miller
 Rich and Carolyn Miller
 Todd and Cindy Miller
 Susan Miller
 Cornelius Milmoie
 John and Kay Modi
 Bill and Bonney Moody
 Ryan Moran
 Vernon and Judy Morgan
 John Mountain
 Cliff and Carol Mowery
 Kevin and Margaret Murphy





Michael and Dayna Murphy
 Stephanie Nadolny
 Maria Negrete
 Ken Nelson and Maura Murphy
 Erik and Janet Nelson
 Raule Nemer and Bob Topp
 Dave Newkirk and Susan Lazo
 Harvey and Carol Newman
 Mark and Elise Newman
 Sonya Norris and Mark Burgeson
 Lydia North
 Peter and Susana Novembre
 Michael O'Herron
 Mitchell O'Neill
 Conor Obrien
 Harlin Oh
 Mandy O'Keefe
 Charles and Betty Oldanie
 Glenn and Patricia Oldenburg
 Jason and Meggan Oliver
 Raymond Ollett
 Betsy and Bruce Olson
 Liz O'Neal
 Jack and Pamela O'Neil
 Devon and Larissa O'Neil
 Lori Ott
 Dorothy Ott
 Richard Otterberg
 Reed and Kelly Owens
 Bonni Pactor
 Malinda Palacio
 Mark and Daphne Pals
 John Parke
 Jim Parker
 Mike and Mary Partheymuller

Travers Paterson
 Barbara Payne
 Joanne Pearson and Homer Turner
 Butch and Sally Peel
 Craig Perrinjaquet
 John Pershing and Catherine Pershing
 Eugene and Margaret Petrino
 Wendi Petro
 William Phillips
 Yves and Cary Picoup
 Ben Pleimann
 Russell Pochop
 Casey Pommer
 Kristine, Scott, and Chloe Poston
 Hilda Poulsen
 Gloria Pryzant
 Bruce and Sally Queen
 Jim Rae
 Barry and Nancy Rafferty
 Peter and Donna Raich
 Carla Randall
 Todd and Barb Rankin
 George and Phyllis Raynor
 Terri Reeder
 Darcy Rehn
 Ryan Reider
 Phil and Donna Reinsch
 Kris Reitz
 William and Susan Repphun
 Norm and Chris Reynolds
 Daniel and Lillie Richardson
 Mark and Colleen Richmond
 David Rishavy

Steve and Peggy Ristorcelli
 Brian Roach
 Tracey Roach
 Frank Roberts and Erin Hogan
 Austin Roberts
 Richard Robertson and Sonja De Herdt
 Brendan Rodman
 Alexander Rongione
 Marion Rose
 Kevin Rose
 Steve and Laura Rossetter
 Kelly Rostad
 Robin Rothman
 Neil Rubinstein
 Terry and Debbie Ruckriegle
 Karie Ryan
 Carol Saade
 Clarice Sage
 Jack and Janice Sage
 Robert and Catherine Salipante
 BJ and Lucy Sample
 Jim and Dianne Sample
 Kevin and Denice Santos
 Zack Sapinsley
 Gregg Saunders
 Jon Sawvell
 Nancy Schaffer
 Bill Schantz and Carol Bacon-Schantz
 Everett Schneider and Robert Phifer
 Mark Schneider
 Ron and Jane Scholl
 Maggie Scott

Lisa Seaman
 Yuval Segal
 Victoria Seligman
 Paul and Martie Semmer
 Michael and Ksusha Shambarger
 Evan Shaw
 Irwin Sheer
 Darlene Sheppard
 John and Jean Sherman
 Larry Shoe
 Kirkton and Debbie Shoop
 Mark Short
 Jennifer Sicard
 Tory Sigmond
 Sharon Siler
 Charles and Carol Simpson
 Margie Sinton
 Herbert and Anne Sirowitz
 Andee Skinner
 Kevin and Karen Skruch
 Gurney and Lisa Sloan
 David, Julie and Bethany Smith
 Jay and Helen Smith
 Dan Smith
 Tracy Smith
 Brian Smith
 Michael Smith
 David and Patricia Smith
 Ed Smith
 Rob Smithpeter
 James and Maree Sneed
 Roy Snider
 Brian Solganick
 Howard and Cindy Solganick
 Aris and Suzanne Sophocles





Brian and Kasi Southard
 Pat Spitzmiller
 Bob and Carolyn Springer
 Jenny and Mark Stafford
 Charles and Jean Staunton
 Charles and Jacqueline Stein
 Ellie Stern
 Jamie Stevens
 Andrew Stevens
 Kevin Stickelman
 Mel Stjernholm
 Sonya Strage
 Stan Strauss
 Benjamin Strine
 Scott and Krista Stroffner
 Jerome Sturhahn
 John-David Sullivan
 Morgan Swank and Patrick Rudersdorf
 Steve and Kathleen Swanson
 John Swartz
 Brick Sweet
 Mike and Barb Tabb
 Brad and Deanya Taylor
 John and Pat Taylor
 Kamila Taylor
 Erik and Melanie Taylor
 Robin and Patty Theobald
 John Thompson
 Robert and Mary Jo Tidey
 Frank Toback
 Paul and Jennifer Tobin
 Patricia Todd
 Brian Topping
 James Townsley

Marie Trapp
 Lisa Travis
 Debbie and Ralph Trevino
 Jim and Marty Trisler
 Greg and Kerry Trotter
 Russ and Janey Trowbridge
 Ralph and Laurie Tullier
 Jennifer Tuteur
 Harold and Debbie Tyber
 Ted and Linda Upstill
 Margaret Van Vliet
 Raymond Van Wagener
 Amy VanDyken-Rouen and Tom Rouen
 Gregory and Kathleen VanWieren
 Jim Vogel
 Robert and Sharon Vondrak
 Erin Wade
 Aubree Wagner
 John and Sheila Walker
 Shannon & Marc Wallace
 Bob and Molly Walsh
 Michael Walzak
 John and Carre Warner
 Rik and Susan Washburn
 Rachel Weber
 Paul Wehrle
 Mary Weiner
 Scott and Ruth Weirich
 Eric and Katie Wengenroth
 Ira Wertenteil
 Eric and Dawn West
 Coy West
 Gary Wiedemann
 Quentin and Betty Wiest

Larry and Pamela Willhite
 Walt Williams and Liz O'neal
 Justin Williams
 Clem Williams
 Layton and Ann Wilson
 Rossi Wingler
 Mary Winquest
 Molly Withers
 Norbert and Mary Wojcik
 Jack and Wendy Wolfe
 Evan and Sondra Wolff
 Randon and Audrey Woodard
 Richard and Sara Wrenn
 Tom Wunderlich
 Bobby Yates
 Vicky Yeap
 Rob and Sharon Yetter
 Lydia Young
 Melissa Zack
 Andrew and Stephanie Zinn

Blue River Sports/Mountain Wave
 Boone and Associates
 Boyce Family Charitable Fund
 Breck Life Group
 Breckenridge Grand Vacations
 Breckenridge Mountain Rotary Foundation
 Breckenridge Ski Resort
 Carl and Caroline Swanson Foundation
 Centura Health
 Charina Endowment Fund
 Chevron
 Columbine Hills Construction
 Continental Divide Winery
 Copper Mountain Resort
 Cornerstone Real Estate Rocky Mountains
 Craig H. Neilsen Foundation
 Creative Cabinetry
 CTL Thompson, Inc.
 Custom Mountain Architects
 D'Augustine Foundation
 Davignon Charitable Fund
 Denver Active 20/30 Children's Foundation
 Denver Gem Cutting
 FirstBank
 GE Johnson Construction Company
 Gravity Haus
 Habitar Design
 Hampden Academy
 Home and Ranch Properties
 Ifurnish
 Jacobs Engineering

ORGANIZATIONS

2VS Landscaping & Irrigation
 Adobe, Inc.
 Agape Roasting
 Agile Staffing Groups
 Ahlstrand Family Foundation
 Alpine Bank
 Amazon Smile
 Anderson
 Anschutz Family Foundation
 Arrow Insurance Management
 Ball Corporation
 Bighorn Rentals





JW Kieckhefer Foundation
 Kaighin & Marian Watts Family Fund
 Kroger
 Land Title Guarantee Company
 Limber Grove Headwear
 Locals Liquors
 Lundquist Associates, Inc.
 MaggieGeorge Foundation
 Margaret T. Morris Foundation
 Mckinsey & Company
 Mistler Family Foundation
 Mountain Building Solutions
 Mountain Glo
 Mountain Pride Cleaning and Restoration
 Move United
 Nationwide Mutual Insurance Company
 Nature's Own
 Nicholas Family Foundation
 Parosol Tahoe Community Foundation
 Peak Life Studio
 Pinnacle Mountain Companies
 Prescription Alternatives
 Project For Good Fund
 Robert and Mary Jane Smith Foundation
 Rockridge Building Company
 Rocky Mountain Health Foundation
 Roy A. Hunt Foundation
 Shell Oil Company Foundation
 Ski-It-Again.com LLC

Slifer, Smith & Frampton Foundation
 South Park Exxon
 Stone Alters Art, LLC
 Stuhr and Associates, L.L.C.
 Summit 2nd Homes
 The Abner & Mildred Levine Family Foundation
 The Moniker Foundation
 The Summit Foundation
 Town of Breckenridge
 Town of Frisco
 Town of Silverthorne
 United Hoist Equipment, Inc.
 United Way
 West Huntley Gregory Lawfirm
 William H. Donner Foundation
 Wounded Heroes Family Adventures

IN-KIND DONORS

African Eyes Travel
 Agape Roasting
 Annie E. Casey Foundation
 Arapahoe Basin Ski Area
 Jane Barber
 Black River Outfitters
 Blue River Sports/Mountain Wave
 Breakthru Beverage Colorado
 Breckenridge Grand Vacations
 Breckenridge Ski Resort
 Callaway Golf
 Robert Collins
 Colorado Bath Company
 Colorado Rockies

Copper Mountain Resort
 David V. Gonzales Art
 Dean Johnson
 Denver Broncos Charities Fund
 Elizabeth Braker
 Folsom Custom Skis
 Gary Soles Gallery
 Bob Gregory
 Ifurnish
 Jeff Inouye
 Jen and Brad Baltz
 Kendra Scott
 Keystone River Golf Course
 Keystone Ski Resort
 Kristi Williams Photography
 Leslee Balten
 Loveland Ski Area
 Marmot
 Meier Skis
 Mi Casa Restaurant & Cantina
 Christi Meril Art
 Mizuno
 Performance Tours Rafting
 John and Jan Quigley
 SealSkinz
 Neil Sherman
 Srixon
 Statz
 Steve Adelman and Elizabeth Elsnor
 Storm Enterprises, Inc
 Summit County Sheriff's Office
 Robert Taylor
 Timberline Disposal & Recycling
 Town of Breckenridge

Vail Resorts EpicPromise
 Vita Brevis Fine Art
 West Huntley Gregory Lawfirm
 Wines For Humanity
 Gertrude Young

Special thanks to our Key Corporate Partners who gave \$50,000 or more in the calendar year and our Circle of Support Corporate Members who gave between \$10,000 and \$49,999 in the calendar year. Donations include cash, in-kind support and matching gifts.

Key Partners



Circle of Support



Financials

Independently audited by Stuhr & Associates, LLC

Statement of Financial Position, September 30, 2021

With Comparative Totals for 2020

	FY 2020-21	FY 2019-20
ASSETS		
Cash and cash equivalents	830,048	707,066
Short-term investments	116,246	113,966
Accounts receivable	112,401	15,462
Pledges receivable	0	0
Prepaid expenses	26,322	18,000
Long-term investments	1,923,990	1,682,459
Property and equipment (net), inventories	1,925,401	1,955,133
Total current assets	4,934,408	4,492,086
LIABILITIES AND NET ASSETS		
Liabilities:		
Accounts payable	14,689	26,517
Note Payable - Paycheck Protection Program	239,486	150,100
Deferred revenues	3,955	17,140
Total current liabilities	258,130	193,757
Net Assets:		
Unrestricted	3,602,259	3,164,721
Temporarily restricted	635,031	694,620
Permanently restricted	438,988	438,988
Total net assets	4,676,278	4,298,329
TOTAL LIABILITIES AND NET ASSETS	4,934,408	4,492,086

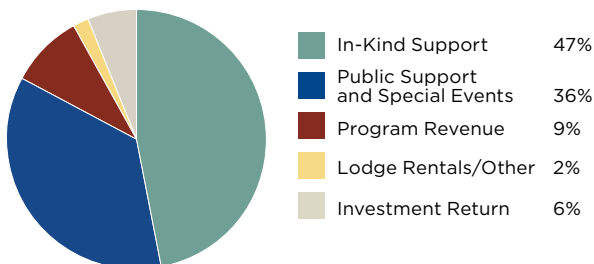


Statement of Activities and Changes in Net Assets for the Year Ended September 30, 2021

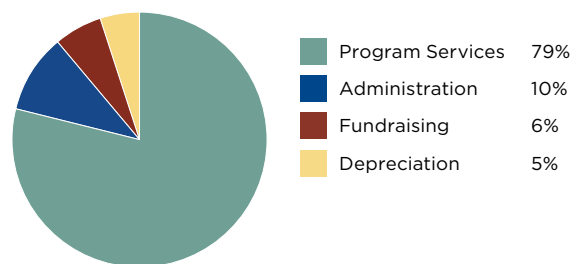
With Summarized Financial information for the Year Ended September 30, 2020

	Unrestricted	Restricted 2020-21	FY 2020-21 TOTAL	FY 2019-20 TOTAL
PROGRAM AND SUPPORT REVENUE				
Public Support:				
Contributions, donations and grants	1,000,103	371,614	1,371,717	1,080,228
Program Revenue:				
Tuition	494,833		494,833	540,632
Less scholarships and discounts	(140,898)		(140,898)	(123,693)
Net tuition	353,935		353,935	416,939
Additional program fees	14,885		14,885	2,400
Program in-kind support	1,936,603		1,936,603	1,935,477
Lodge Rentals	61,687		61,687	69,367
Special Events	114,676		114,676	141,076
Misc. income	5,470		5,470	13,145
Investment Return	203,676	40,346	244,022	142,348
Net assets released from restrictions	471,549	(471,549)		
Total revenues, gains and other support	4,162,584	(59,589)	4,102,995	3,800,980
EXPENSES				
Program services	2,939,670		2,939,670	2,901,179
Administration	367,111		367,111	334,737
Fundraising	231,993		231,993	239,525
Depreciation	186,272		186,272	188,262
Total expenses	3,725,046		3,725,046	3,663,703
Change in net assets	437,538	(59,589)	377,949	137,277
Net assets as of beginning of the year	3,164,721	1,133,608	4,298,329	4,161,052
Net assets as of end of the year	3,602,259	1,074,019	4,676,278	4,298,329

Revenues FY 2020-21
\$4,102,995



Expenses FY 2020-21
\$3,725,046





“I can’t find the words to express *how great my experience with the BOEC was. The activities were well planned and fun, but the staff made the week something unforgettable. I came away with the feeling that I really mattered and was respected and cared for in a special way. The staff was truly the most wonderful group of young people to be found anywhere. They genuinely love their work and treated us like royalty. I will always consider this the best experience ever!”*

—Mind’s Eye Travel Wilderness Program Participant



**Breckenridge
Outdoor
Education
Center**



P.O. Box 697 • Breckenridge, CO 80424
(800) 383-2632 • (970) 453-6422 • fax (970) 453-4676

www.boec.org

Thank You Key Partners



TOWN OF
BRECKENRIDGE

mountain wave

Accreditations



BOEC is an equal opportunity service provider and employer. BOEC operates under special use permit from the USDA Forest Service, White River National Forest.

All or part of this operation is conducted on Public Lands under special permit from the U.S. Bureau of Land Management.