

Annual Report 2018-19



**Breckenridge
Outdoor
Education
Center**



BOARD OF DIRECTORS

Bill Gillilan, *Chair, Centex Corp, CEO (Retired), Breckenridge, CO **

Barb Rankin, *Vice-Chair, Cornerstone Real Estate Rocky Mountains (Owner), Breckenridge, CO **

Dr. Aris Sophocles, *Treasurer, Family Care Medical Center (Owner), Denver, CO **

Leslee Balten, *Secretary, Ciancio Ciancio Brown, P.C. (Attorney/ Partner), Breckenridge, CO **

Robin Adams, *Giving Spring Realty (Owner), Colorado Springs, CO*

Ed Anderson, *Connexion Asset Group (CEO), Denver, CO*

Harry Backas, *Buffalo Mountain Managers, LLC (Owner) Summit County, CO*

Kristen Bennett, *Alzheimer's Association Region 4 (Finance Manager), Denver, CO*

John Buhler, *Breckenridge Ski Resort (VP & COO), Breckenridge, CO*

Tim Casey, *Mountain Marketing Associates (Owner), Breckenridge, CO **

John Cooley, *Marmot, VP, (Retired), Sedalia, CO **

Gene Dayton, *Breckenridge Nordic Center (Owner), Breckenridge, CO*

Mike Dudick, *Breckenridge Grand Vacations (Co-Owner/CEO), Breckenridge, CO*

Robert Gregory, *West Brown Huntley, P.C. (Attorney), Breckenridge, CO*

Nicholas Job, *FirstBank of Summit County (Vice President), Breckenridge, CO*

Ted Lawson, *Southwest Airlines (Retired), Breckenridge, CO **

Gurney Sloan, *Membership Marketing Partners, LLC (CEO), Colorado Springs/Frisco, CO **

Erik Taylor, *Arrow Electronics, Inc. (Senior Manager), Denver, CO*

** Indicates Executive Committee*

A Letter from our Executive Director and Chairman of the Board

A Letter from our Executive Director

During these uncertain times, we are all looking for the light and in few places does it shine brighter than at the BOEC. I hope that as you read through this year's annual report you will feel the same pride that I feel knowing that together we have accomplished so much.

During the 2018-2019 season, we again served over 2,700 participants between both our summer and winter programs over 8,000 programming days. For the 44th year, we graduated two groups of interns, which included 26 impressive young professionals who will shine their own light on the adaptive sport world in the years to come. By subsidizing programs through contributions from our generous partners and awarding scholarships to those in need, we once again met our commitment to keep BOEC programs as affordable as possible for all participants, awarding over \$255,000 in tuition assistance.

Our focus this year was on maintaining a high level of program delivery across all programs, improving communication to all of our important constituents (you!), and to produce fun, engaging and successful events. We continued to provide access to staff training and professional development and made progress on capital projects and improvements, which are critical to our ability to meet the continued demand for BOEC programs.

Thank you to our generous donors and partners who this year helped us reach a fundraising milestone that allowed us to expand programming, upgrade our facilities, provide scholarship assistance to those in need and purchase much-needed equipment. Thank you to our Board of Directors who give generously of their time, energy and expertise to support the BOEC. I extend my sincerest and heartfelt thanks to all of our volunteers, your passion and energy helps to make us who we are! And finally, thank you to the BOEC team members who are the heart and soul of the BOEC.

We ended the 2018-2019 year in strong financial health which has allowed us to take on the current crisis with the knowledge that with careful fiscal management and a commitment to protecting all that each of you has helped to build, the BOEC will be here for many years to come.



With Gratitude,



SONYA NORRIS
Executive Director

A Letter from our Chairman of the Board

I am fortunate to be part of the Breckenridge Outdoor Education Center Community. The soul of the BOEC Community is its passionate, dedicated and creative staff and its many volunteers who, led by Executive Director, Sonya Norris, provided life-changing adaptive outdoor experiences for close to 3,000 participants in 2018-19. In each of its many summer and winter programs, the BOEC staff and volunteers strive to inspire in every participant the confidence and joy gained from experiencing freedom in the outdoors, created by individual accomplishment and working together as a team.

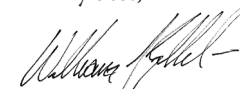
The generosity of the BOEC's many supporters keeps the BOEC financially sound and able to offer scholarships for many of its participants. A special thank you to all of our key partners including Breckenridge Ski Resort, Keystone Ski Resort, Epic Promise, Blue River Sports/ Mountain Wave, and the Town of Breckenridge all of whose support is critical to the success of the BOEC's adaptive programs.

Lastly, I thank each member of the BOEC Board of Directors for generously providing leadership and the willingness to step up to meet any challenge when their wisdom and experience are called upon to keep the BOEC's foundation resilient and strong.

On behalf of the BOEC Board of Directors, congratulations to the entire BOEC Community for, perhaps, the most successful year in the history of the BOEC. May there be many, many more.



All my best,



BILL GILLILAN
Chairman of the Board

Who We Served

BRECKENRIDGE OUTDOOR EDUCATION CENTER FISCAL YEAR DEMOGRAPHICS 2018-19

	Ski Program	Wilderness Program	Total Ski + Wilderness	Intern Program	Total ALL PROGRAMS
INDIVIDUALS SERVED	1,320	1,450	2,770	26	2,796
PROGRAMMING DAYS	3,579	4,485	8,064	2,923	10,987



HEROIC MILITARY PROGRAMMING

80 Veterans
80 Family Members
160 Participants
1,183 Programming Days

Participants from Colorado

SKI	46%
WILDERNESS	70%
TOTAL SKI + WILDERNESS	56%

Participants from Out of State

SKI	48%
WILDERNESS	29%
TOTAL SKI + WILDERNESS	41%

Participants from Foreign Countries

SKI	2%
WILDERNESS	1%
TOTAL SKI + WILDERNESS	3%

Scholarship Amounts Awarded

SKI	\$105,397
WILDERNESS	\$150,114
TOTAL SKI + WILDERNESS	\$255,511

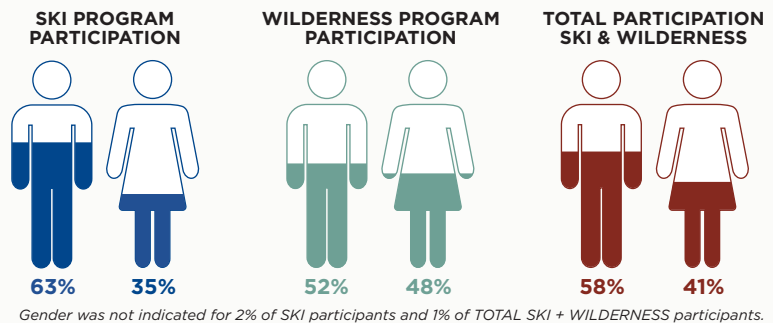
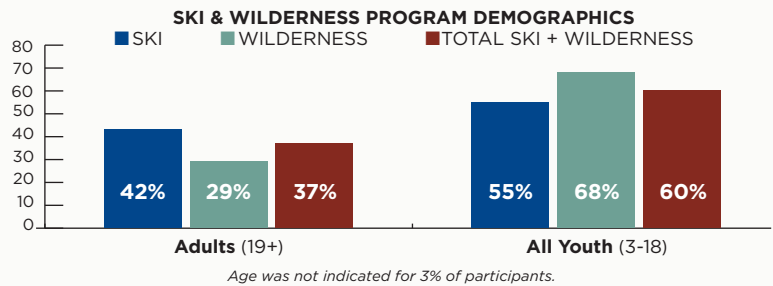
% of Individuals on Scholarship

SKI	29%
WILDERNESS	21%
TOTAL SKI + WILDERNESS	25%

Location was not indicated for 4% of ski participants.

THE MOST COMMONLY SERVED DISABILITIES IN 2018-2019 WERE:

At Risk Youth, Autism, ADD/ADHD, Amputee, Cleft Lip & Palate, Cerebral Palsy, Developmentally/Cognitive/Learning Disabled, Down Syndrome, Mental Illness, Multiple Sclerosis, Post Traumatic Stress Disorder, Spinal Cord Injury, Traumatic Brain Injury and Visually Impaired.



Participants come to BOEC from all 50 states, Washington, D.C. and all over the world. This year, participants came from Brazil, Canada, Costa Rica, Mexico, Puerto Rico, United Kingdom and Venezuela. Additionally, our Intern Program included individuals from Australia and the United Kingdom.



The Year in Highlights

The following highlights some of our major accomplishments from this past fiscal year.

PROGRAMS

ADAPTIVE SKI AND SNOWBOARD PROGRAM

BOEC's Adaptive Ski and Snowboard program, located at both Breckenridge and Keystone Ski Resorts, saw an 8.2% increase in programming days from the previous fiscal year. In total, 3,579 program days served 1,320 adults and children, with a wide array of disabilities and special needs, a 6.8% increase. Participants came from across Colorado (46%) and the U.S. (48%), as well as from around the world (2%), to experience the joys of adaptive skiing and snowboarding through our world-class program.

BOEC continues to bring back repeat individual and group participants year-after-year, but also works hard to attract new clients in order to ensure program sustainability. Longtime returning groups in the 2018-19 fiscal year included the U.S. Association of Blind Athletes (USABA), Children's Hospital Colorado, Evergreen Parks & Recreation, FRIENDS of Broomfield, King Adult Day Enrichment Program (KADEP), Team Semper Fi, The Not Forgotten Association (NFA), and Fox Valley Institute. A few new groups were added to the slate including the Pikes Peak Shredders, a Special Olympics group from Colorado Springs, and the Roundup School also from Colorado Springs.

We also added a fleet of new mono-skis, bi-skis and ski bikes to our already impressive collection thanks to our generous supporters.

WILDERNESS PROGRAM

BOEC's year-round Wilderness Program served 1,450 students for a total of 4,485 programming days during the 2018-19 fiscal year. Of those participants, 70% hailed from right here in Colorado, and 30% came from across the U.S. Participants came to us with a wide assortment of disabilities and special needs, including Amyotrophic

"I just had one of the greatest weeks of my life! From jumping off cliffs into freezing river water to simply just sitting and talking underneath the stars, everything was just so beautiful. It's funny how quickly someone's opinions can change. I went into this week wishing it would just end already, and I'm coming out of it with a mustache, an empty chocolate milk bottle, wet socks and shoes, a smile spread across my face, and wishing this week would never end."

—BOEC Wilderness Program Participant

Lateral Sclerosis (ALS), traumatic brain injuries, cerebral palsy (CP), cleft lip and palate, multiple sclerosis (MS), Parkinson's Disease, sensory integration dysfunctions, and spinal cord injuries.

Thanks to our generous donors, this year we were able to add much-needed program equipment and replace some aging vehicles. We procured an entire fleet of new adaptive kayaks and stand-up paddleboards, all the bells and whistles to make a phenomenal experience for our students. We also purchased two new vehicles - a truck and SUV - enhancing our ability to transport equipment and smaller groups to and from mobile program locations.

There were a number of returning agencies and groups in 2018-2019, many of them partnering with BOEC from five to over 20 years. Some of these longtime partners include the Brain Injury Alliance of Colorado (BIAC), Basalt School District, Children's Hospital Colorado (Aurora), Jefferson Center for Mental Health, Serendipity, Summit Outdoor Adventure Program (SOAP), Vail Mountain School, and Wounded Heroes Family Adventures (WHFA).

We are also very proud to add to our growing list of valued partners with some new programs this past year, including Camp Forget Me Not for children who are dealing with the death of a family member, Minds Eye



"My 7-year-old daughter Arya, who has no vision, attended your ski program at Keystone this December. I am absolutely impressed by the level of skills your coaches have and the effort and personal caring they showed towards Arya. Everyone was attentive and careful without coddling Arya and letting her explore the snow and sensation of skiing. She had so much fun that she's already asking to go back. Your program is amazing and I am very thankful to y'all for putting it together, getting all the skilled coaches and the enthusiastic volunteers."

—Mother of Adaptive Ski & Snowboard
Program Participant

Retreat for adults living with visual impairments, and Cleft Lip and Palate Clinic - in conjunction with Children's Hospital Colorado Springs - for children to spend quality time with others who share a similar diagnosis.

HEROIC MILITARY PROGRAM

BOEC's year-round Heroic Military Program provides programs and events designed to bring families together and help America's veterans with their recovery and healing process. Additionally, this program provides a platform for these individuals to find connections with other veterans dealing with similar circumstances. Once again in 2018-19, this program continued to provide just that, delivering 1,183 program days to 80 disabled veterans and 80 of their family members. A total of \$139,776 in restricted grants and contributions allowed these veterans and their families to participate at little or no cost to them as well as buy new equipment for our Heroic Military Programming. We are especially grateful to the Department of Veterans Affairs, from which the majority of this funding originates.

BOEC's Wilderness Program ran six trips and camps for 38 disabled service members and 80 family members. These events included Wounded Heroes Mountain Family Adventures, EOD Warrior Foundation, Heroic Families Wilderness Adventures, Heroic Family San Juan River Trip, Heroic Families Ruby-HorseThief/Westwater River Trip, and Heroic Womens Ruby-HorseThief/Westwater River Trip.

The Adaptive Ski and Snowboard Program delivered another spectacular lineup of courses in 2018-19, including Team Semper Fi, The NFA, Wounded Heroes Family Ski Week (WHFSW), and USABA. Two long-standing week-long events also returned with the Keystone Adaptive Military Camp at our Keystone Adaptive Center (KAC) and The Hartford Ski Spectacular at Breckenridge Ski Resort.

INTERNSHIP PROGRAM

Perhaps one of the more unique and competitive aspects of the BOEC is its Internship Program. In 2018-19 we continued this strong tradition with the training of 26 dynamic, young individuals interested in the fields of Outdoor/Experiential Education, Therapeutic Recreation, and Recreation Management. These 14 winter and 12 summer interns were immersed into the field to gain professional experience and knowledge in this growing field. To date, we have graduated over 1,000 talented individuals, many of whom have gone on to work in the adaptive outdoor education and therapeutic recreation fields in the U.S. and worldwide.

VOLUNTEER PROGRAM

For 43 years, BOEC's volunteers have been the backbone of the Adaptive Ski and Snowboard Program, spending countless number of hours to provide a seamless experience and much-needed support to our instructors and students. 2018-19 was no different as upwards of 335 volunteers completed 19,844 hours. The Volunteer Program also functions during the summer months

"I can honestly say that those seven days on the river changed my life. I have been angry at just about everyone for what happened to me and my fellow soldiers in Vietnam and I realized during this trip that people really do care about me and other veterans, people who are willing to help us heal. I came home a different person. I finally realized that life is too short to continue to dwell on all the bad things that happened to me in Vietnam. What is important now, is how I choose to live the rest of my life. I thank the staff at the BOEC for all the help and support you gave me and the other veterans."

—Heroic Military Program Participant



as these generous individuals support the summer Wilderness Program, primarily with the adaptive cycling camps and special events, including the Banff Mountain Film Festival, Breckebeiner Nordic Ski-a-Thon, Cinco de Mayo Celebration and Tee It Up Golf Scramble.

The BOEC could not do what it does without the enormous amount of time and energy provided by its volunteers, and for that, we are extremely thankful!

"It is hard to put into words the impact that the BOEC made on me in just 4.5 months. I was not only impacted by the students on my lessons but by the entire BOEC staff and of course, my fellow interns who I now consider family. Through transitioning to lead positions on lessons, being entrusted with great responsibilities, and having a support group of the most patient and accepting people, I gained confidence in who I am as an individual and it sparked a desire in me to be my authentic self in every situation of life."

—BOEC Intern

FUNDRAISING

During the 2018-19 fiscal year, we surpassed our fundraising goals including a 61% year over year increase in special event fundraising. This was due in large part to our generous and dedicated community of donors, partners and supporters as well as the work of our amazing staff in managing resources.

The BOEC Board of Directors, several major donors, and generous foundations increased year over year funding which helped us to surpass our annual goal. The breakdown of funding included 43% in foundation grants, 29% in individual gifts, 11% federal and local government funding, 11% special events, 4% corporate, and 2% memorial.

Our four signature events, Banff Mountain Film Festival, Breckebeiner Nordic Ski-a-Thon, Cinco de Mayo Celebration and Tee It Up Golf Scramble, combined to raise a record-breaking total of \$121,973.

Our in-kind contributions continue with a multi-million dollar valuation. Without the monumental support

of our Key Partners who contribute \$2.3 million annually in in-kind services, facilities and supplies, BOEC would not be who we are today. The BOEC Key Partners include the Town of Breckenridge, Breckenridge Ski Resort, Keystone Ski Resort, Vail Resorts EpicPromise, and Blue River Sports/Mountain Wave.

Thank you to all of our generous contributors, donors and partners that support the BOEC in so many ways.

BOEC STAFF

ADMINISTRATION

SONYA NORRIS
Executive Director

KAREN SKRUCH
Finance Director

MELISSA KUWAHARA
Office Manager

DEVELOPMENT

BARRY RUBENSTEIN
Marketing & Events Manager

HALLIE JAEGER
Development Manager

WILDERNESS PROGRAM

JAIME OVERMYER
Program Director

CLAIRE DICOLA
Associate Program Director—Admissions

STEVEN RUBIN
Program Coordinator

BEN HICKMAN
Facilities and Capital Manager

ADAPTIVE SKI AND SNOWBOARD PROGRAM

JEFF INOUE
Program Director

MARK GREER
Associate Ski Program Director

JILLIAN PALACIO
Ski Program Coordinator

ROBERTO GUTIERREZ
Volunteer Coordinator

KYLE CALBAT
Ski Program Supervisor

KATIE BREW
Keystone Adaptive Center Coordinator

LINDSEY HAHN
Keystone Adaptive Center Supervisor

INTERNSHIP PROGRAM

KAT BOOTH
Intern Program Coordinator

"We had an absolutely fabulous experience! Your staff is the best! We loved their enthusiasm, their knowledge of child development, their sense of humor, and their personalities in general! I was sad to leave, as was everyone else."

—Summer Wilderness Program
Group Coordinator



Contributions

We thank all of our donors and contributors for their support during the fiscal year October 1, 2018 through September 30th, 2019. In-kind donations are indicated by (*), cash plus in-kind donations are indicated by (**). Please notify us of any errors or omissions.

\$50,000+

Carl and Caroline Swanson Foundation
Craig H. Neilsen Foundation
Department Of Veterans Affairs
MaggieGeorge Foundation
Town of Breckenridge**
Breckenridge Ski Resort*
Keystone Ski Resort*
Blue River Sports**/Mountain Wave*

Rob Mathis
Membership Marketing Partners LLC*
Matthew and Allyson Murphy
National Recreation Foundation
Roy A. Hunt Foundation
Gurney and Lisa Sloan
Dr. Aris and Suzanne Sophocles
Storm Enterprises/Mi Casa Mexican Restaurant & Cantina**
Vail Resorts/Epic Promise*

Jane Barber**
Carri and Doug Berenson
Black Diamond Equipment*
Thomas and Susan Bratschun
Breckenridge Mountain Rotary Club
Doug and Peggy Brown
John and Kerry Buhler
Charles Cannon
Chevron Matching Employee Funds
Chase and Susan Coale

Ted and Jean Lawson
Bill and Ann Levis
Chuck Lenzmeier and Valerie Williams
Jerome and Lynne Lohmann
Looking Glass Corvette Association
Louis R. and Dorothy M. Meister Foundation
Margaret T. Morris Foundation
Wayne McLaren
Sinjin McNicholl

\$20,000 - \$49,999

Breckenridge Grand Vacations/ BGV Gives**
Denver Active 20/30 Children's Foundation
The Denver Foundation, Lowe Fund
Bill and Susy Gillilan
Copper Mountain Ski Resort*
The Summit Foundation

\$5,000 - \$9,999

Anschutz Family Foundation
J.P and Kristen Bennett
Breckenridge Nordic Center**
D'Augustine Foundation
Karen Dixon
Ryan Estes*
Foreseeable Future Foundation
Ifurnish**
Roger and Jill Kurtz
Recycle Sports
Robert and Mary Jane Smith Foundation
Steve and Laura Rossetter
Safeway Foundation
Nick Smith and Pat Campbell

CTL Thompson
Ed Anderson
Creative Cabinetry
Jim Cuning and Lisa Stone
Gene and Therese Dayton
Isabel D'Epinay
Ruth Dicembrino
Daniel and Julie Dobler
David and Anne Dross
Edward and Janet Ahlstrand Family Foundation
Bob Follett
John Forest
Gary and Genia Gallagher
Donna Gammenthaler
Jonathan and Robin Gear
David Gonzalez*
Pier Gugliotta
Linda Hammond
Joan Heinle
Ironvine/Mendlik Charitable Fund
Peter and Stacy Joyce
Kerr Foundation
Kona Coffee Café
Steve and Susan Lapinsohn
Steve and Pat Larson

Patricia Merschorf
Dwight and Diane Mikulis
Coreen and Mike Miller
Mistler Family Foundation
Mountain Pride Cleaning and Restoration
Michael and Dayna Murphy
Raule Nemer and Bob Topp
Norehad Charitable Trust
Mark and Gretchen Olmsted
Omaha Community Foundation
Dr. Craig Perrinjaquet
Pearson Adair & Company, LLC
Peak Performance Copiers*
Martin Penny
QEP Resources
A Racers Edge*
Rocky Mountain Redline, LLC
Margie Sinton
Jeffrey Skinner
Slifer, Smith & Frampton Foundation
David and Julie Smith
Scott and Judy Sodergren
Brian Solganick
Howard and Cynthia Solganick
Brad and Katharine Stoffer

\$10,000 - \$19,999

Anonymous
Kim and Rosie Batcheller
Tim Casey
Charina Endowment Fund
John and Neide Cooley
Cornerstone Real Estate Rocky Mountains
Larry and Janet Crispell
FirstBank of Breckenridge
James L. and Ann R. Foil Foundation
GE Johnson Construction Company Community Foundation
Phil and Barbara Gibbs

\$1,000 - \$4,999

John Humbrecht*
John and Janice Quigley
Doug Briggs*
Gertrude Young*
Alex Gelb
18th Judicial District
Ball Corporation



Stratagem Construction Inc.
 Stuhr and Associates, LLC
 Summit County Senior Citizens
 Summit Homes
 Construction, LLC
 The Coffee Depot
 The Giving Solace Fund
 Bob and Mary Jo Tidey
 Town of Dillon
 Town of Frisco
 Town of Blue River
 Town of Silverthorne
 James and Marty Trisler
 Janet Ulrey and Carl Richter
 Michael Walzak
 Rik and Susan Washburn
 Ira Wertenteil
 Ward Williford
 Joe Wilson
 Hans and Mary Jane Wurster
 Rob Yetter

\$250 - \$999

Kathy Angotti
 Administrative Alternatives
 Alpine Bank
 Douglas Alvine
 Todd and Nancy Amberger
 Jim and Amy Anderson
 The Annette and Anthony
 Albanese Foundation
 Bob and Amy Arzbacher
 Suzanne Auburn
 Harry and Lindsay Backas
 Brian Bahr
 Penny Banks
 Frank and Mary Barry

Erin Bastman
 Beaver Run Resort
 Ron and Robin Benko
 Bhava Yoga LLC**
 Gregory and Jennie Bilhartz
 Eddie and Patti Bowers
 Bruce Fitch and Gini Bradley
 Phil and Janelle Brown
 Vanco and Maja Buca
 Dr. Jeffrey Cain
 Timothy Campbell
 Carboy Winery
 Mark and Sharon Chertok
 Jaycee Chinn and George Quick
 Kelli Cholas
 Jason Cook
 Chandler Copps
 Steve Corneillier
 Carl Covington
 Edward and Anne Crane
 Doug and Heather Davis
 Mountain Glo Tanning
 Charles Dayton and Sara Evans
 Mike Dayton and Kate Tsai
 John Derickson
 Shawn Doherty
 Maggie and Wally Ducayet
 Robin Duryee
 Evan and Kim Ela
 Empire Burger
 Ron Fee
 Edwin Fischer
 Florence's Hat Project
 Joseph Fulcher
 Wayne and Peggy Galvani
 Mario Garcia
 Gateway Golf Group

Jerry and Marge Gavenda
 Sherman Glass
 John and Judy Goebel
 Jose Gonzalez
 Glen Graber
 Reggie and Pam Gray
 Bob and Lesley Gregory
 Clyde Grindell
 Andrew and Sarah Halstead
 William Jeff Hamlett
 Clark and Ruth Hawksworth
 Torrence Hunt Jr.
 Darryl and Kathy Hurst
 Steven and Diane Jaffee
 Erik Johnson
 Vincent King
 Angela Knightley and
 Kent Walker
 Mark and Melissa Kuwahara
 Anne and Andy Lacelle
 Janice Lacoste
 Land Title Guarantee Company
 Adam Larson
 Rob and Lori Lash
 Gordon and Judith Lundquist
 Lundquist Associates, Inc.
 Nancy McKenzie
 Diana Merrell
 Gary Miller
 Vernon and Judy Morgan
 Brian Munger
 Rebekah Munnikhuysen
 Nature's Own
 Nearby Neighbors Foundation
 Sonya Norris and Mark Burgeson
 Ann Norton
 Ralph and Shellie Nowicki

William and Karin O'Halloran
 James Parker
 Pinnacle Companies
 Rebecca Pritchard
 Raitman Art Galleries
 Pete Raskis
 Daniel and Lillie Richardson
 Charlotte Robinson-Pritchard
 Saint Anthony Summit Medical
 Center
 Bob and Cathie Salipante
 Jason Saunders
 Larry and Pat Schmidt
 Evan Shaw
 Marshall and Jane Shaw
 Raymond Skitt
 James and Maree Sneed
 Pat Spitzmiller
 Myles Steele
 Erik Taylor
 Telluride Adaptive Sports
 Program*
 Christian Temmer
 Jennifer Tuteur
 The Hermitage Bookshop
 Therahand Wellness Center
 Ruth Thompson
 Dr. John Warner
 Scott and Ruth Weirich
 Eric and Dawn West
 White House Pizza
 Wilderness Sports
 Justin Williams
 Nancy Winship
 Jack and Wendy Wolfe

**And our appreciation to the
 many \$1 - \$249 donors!**



Financials

Independently audited by Stuhr & Associates, LLC

Statement of Financial Position, September 30, 2019

With Summarized Financial information as of September 30, 2018

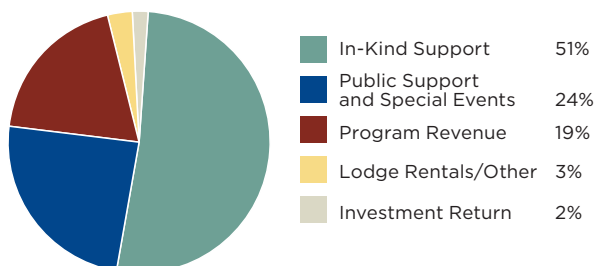
	FY 2018-19	FY 2017-18
ASSETS		
Cash and cash equivalents	407,243	412,841
Short-term investments	111,714	364,575
Accounts receivable	48,287	68,096
Pledges receivable	5,000	100
Prepaid expenses	26,818	21,079
Long-term investments	1,545,409	1,218,390
Property and equipment (net), inventories	2,045,641	1,980,143
Total current assets	4,190,112	4,065,224
LIABILITIES AND NET ASSETS		
Liabilities: Accounts payable	9,410	119,457
Deferred revenues	19,650	28,880
Total current liabilities	29,060	148,337
Net Assets: Unrestricted	3,134,156	2,931,891
Temporarily restricted	587,908	546,008
Permanently restricted	438,988	438,988
Total net assets	4,161,052	3,916,887
TOTAL LIABILITIES AND NET ASSETS	4,190,112	4,065,224

Statement of Activities and Changes in Net Assets for the Year Ended September 30, 2019

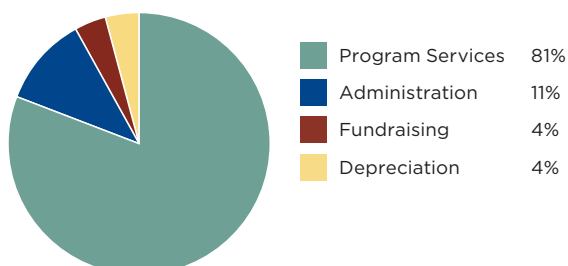
With Summarized Financial information for the Year Ended September 30, 2018

	Unrestricted	Restricted 2018-19	FY 2018-19 TOTAL	FY 2017-18 TOTAL
PROGRAM AND SUPPORT REVENUE				
Public Support:				
Contributions, donations and grants	551,310	416,614	967,924	901,881
Program Revenue:				
Tuition	1,121,555		1,121,555	1,089,770
Less scholarships and discounts	(298,707)		(298,707)	(286,448)
Net tuition	822,848		822,848	803,322
Additional program fees	41,760		41,760	41,878
Program in-kind support	2,290,025		2,290,025	2,212,501
Lodge Rentals	130,910		130,910	96,992
Special Events	76,193	45,780	121,973	87,927
Misc. income	1,311		1,311	897
Investment Return	67,110	13,723	80,833	90,959
Net assets released from restrictions	434,217	(434,217)		0
Total revenues, gains and other support	4,415,684	41,900	4,457,584	4,236,357
EXPENSES				
Program services	3,414,356		3,414,356	2,868,472
Administration	451,645		451,645	421,590
Fundraising	180,353		180,353	180,398
Depreciation	167,065		167,065	96,173
Total expenses	4,213,419		4,213,419	3,566,633
Change in net assets	202,265	41,900	244,165	669,724
Net assets as of beginning of the year	2,931,891	984,996	3,916,887	3,247,163
Net assets as of end of the year	3,134,156	1,026,896	4,161,052	3,916,887

Revenues FY 2018-19 \$4,457,584



Expenses FY 2018-19 \$4,213,419





“The BOEC is a model program *in the industry. Their work in adaptive outdoor experiential programs is unparalleled. The activities are taught in ways that demonstrate experiential education best practices. The organization is clearly mission-driven and every staff member can articulate the mission in a personal and meaningful way.”*

—Association for Experiential Education (AEE)



**Breckenridge
Outdoor
Education
Center**



P.O. Box 697 • Breckenridge, CO 80424
(800) 383-2632 • (970) 453-6422 • fax (970) 453-4676

www.boec.org



mountain wave

BOEC is an equal opportunity service provider and employer. BOEC operates under special use permit from the USDA Forest Service, White River National Forest.

Annual Report design provided by MEMBERSHIP MARKETING PARTNERS, LLC.

©2019 Breckenridge Outdoor Education Center.