

Annual Report 2017-18



**Breckenridge
Outdoor
Education
Center**



BOARD OF DIRECTORS

Bill Gillilan, *Chair*
Barb Rankin, *Vice-Chair*
Aris Sophocles, *Treasurer*
Leslee Balten, *Secretary*

Robin Adams, *Phoenix Unlimited, LLC*
Ed Anderson, *Connexion Asset Group*
Harry Backas, *Buffalo Mountain Managers*
Kristen Bennett, *Accountant*
John Buhler, *Breckenridge Ski Resort*
Tim Casey, *Mountain Marketing Associates*
John Cooley, *Marmot, retired*

Gene Dayton, *Breckenridge Nordic Center*
Mike Dudick, *Breckenridge Grand Vacations*
Robert Gregory, *West Brown Huntley, P.C.*
Nicholas Job, *FirstBank of Summit County*
Ted Lawson, *Southwest Airlines, retired*
Gurney Sloan, *Membership Marketing Partners*
Erik Taylor, *Arrow Electronics, Inc.*

Letters from our Executive Director and Chairman of the Board

DEAR FRIENDS OF BOEC,

As I reflect back on this past year — which was BOEC's 42nd year and my first as Executive Director of this amazing organization — I am reminded daily why we all do what we do.

BOEC completed a spectacular year with nearly 8,000 participant days between both our winter and summer programs serving over 3,200 students between them. We finished and opened our brand-new headquarters building to help us better serve the adaptive sports community, and our staff and programs received critical acclaim from around Colorado and across the country. By subsidizing programs through contributions from our generous partners and awarding scholarships to those in need, we were able to continue to focus on keeping BOEC as affordable as possible for all participants, awarding \$258,500 in tuition assistance and 2,833 scholarship program days.

This fiscal year, we completed the *Securing the Future Capital Campaign*, raising over \$2 million, the largest amount in our history, and moved into our new administrative and logistics center which was the core project of the campaign. This beautiful facility includes a number of upgrades, including much needed seasonal staff housing which enhances our ability to attract and retain the quality staff we need to continue providing outstanding programs.

Also included in the renovation are upgraded administrative offices and improved warehousing for our outdoor adaptive equipment. It did indeed take a village and we are incredibly grateful to the many who contributed to this successful campaign and the completion of this project.

BOEC staff continue to thrive and grow taking each program to the next level with professionalism and passion. I am daily impressed by each of them and so very grateful to be a part of this amazing team of individuals who put the participants we serve first in everything they do. I extend my thanks to our entire team, to our dedicated Board of Directors, the instructors, volunteers and our many supporters for welcoming me to the BOEC family and sharing their expertise and ability with me along the way. We are proud of what we accomplished this past year and look forward to the years ahead.

We thank you for your support of BOEC and look forward to working with you to continue to provide access to outdoor adventure and learning opportunities for those with disabilities and special needs.



With Gratitude,



SONYA NORRIS
Executive Director

DEAR FRIENDS OF BOEC,

As past Chairman of the BOEC, I would like to welcome Bill Gillian as our new Chairman elected in the fall of 2018. A longtime Breckenridge resident and Executive Committee Board member, Bill brings a wealth of knowledge and experience to this role.

It has been a great pleasure working with Sonya Norris during the past year as our new Executive Director. Sonya's collaborative management style empowers others to realize their best. Through her exemplary leadership, she has already added tremendous value to the organization and will continue to do so as our Executive Director.

I would like to thank the Board of Directors for their engagement, commitment of time and knowledge to assure and challenge the BOEC to maintain the highest professional standards and practices. I would also like to recognize the staff for their commitment to fulfilling the mission of the BOEC. Their dedication is truly inspirational and unequalled. They are the soul of the BOEC.

It is our generous and committed donors who make what the BOEC does possible year after year and I am

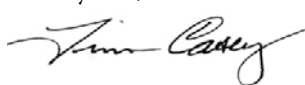
grateful to each of you for helping the BOEC to continue to touch so many lives through our winter and summer programs.

I am overwhelmed at the resources our community donated to the Capital Campaign for the reconstruction of the Wellington headquarters. The equivalent value of nearly \$1,000,000 was generously donated by Peter Joyce, Rockridge Building Company; Jon Gunson, Custom Mountain Architects; Town of Breckenridge; Scott Downen, Columbine Hills Concrete and many other companies, Foundations and individuals who made the project a reality. I can't thank those who participated enough for their amazing contributions.

It has been an honor and privilege to serve as the Chairman of the Board of the Directors for the BOEC and I am confident that the future is in good hands.



All my best,



TIM CASEY
Chairman of the Board

Who We Served

	Ski Program	Wilderness Program	Total Ski + Wilderness	Intern Program	Total ALL PROGRAMS
INDIVIDUALS SERVED	1,236	1,530	2,766	26	2,792
PROGRAMMING DAYS	3,310	4,577	7,887	2,721	10,608



VETERANS
165 Participants
104 Family Members
1,187 Programming Days
\$62,316 Funding

Participants from Colorado

SKI	37%
WILDERNESS	63%
TOTAL SKI + WILDERNESS	1324 OR 59%

Participants from Out of State

SKI	80%
WILDERNESS	20%
TOTAL SKI + WILDERNESS	917 OR 41%

Participants from Foreign Countries

TOTAL SKI + WILDERNESS	30 OR .01%
------------------------	------------

Scholarship Amounts Awarded

SKI	\$93,720
WILDERNESS	\$164,837
TOTAL SKI + WILDERNESS	\$258,500

Individuals on Scholarship

SKI	433
WILDERNESS	477
TOTAL SKI + WILDERNESS	910

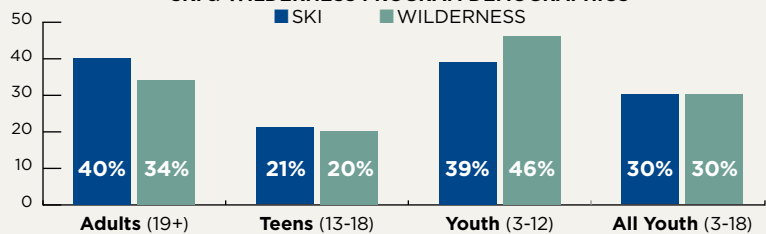
Program Days on Scholarship

SKI	988 OR 30%
WILDERNESS	1,845 OR 40%
TOTAL SKI + WILDERNESS	2,833 OR 36%

Average Scholarship Amount per Program Day

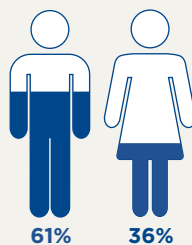
SKI	\$97.62
WILDERNESS	\$87.87
TOTAL SKI + WILDERNESS	\$91.27

SKI & WILDERNESS PROGRAM DEMOGRAPHICS

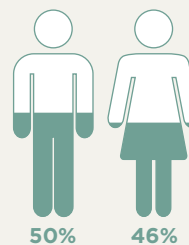


Age was not indicated for .5% of all participants.

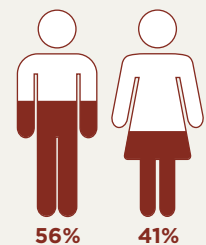
SKI PROGRAM PARTICIPATION



WILDERNESS PROGRAM PARTICIPATION

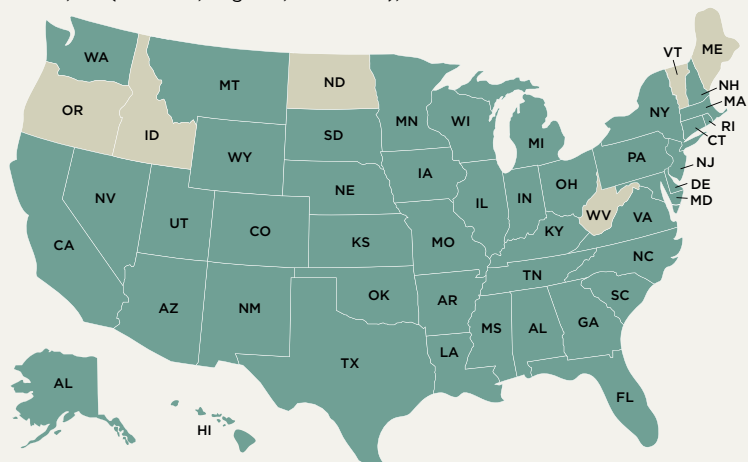


TOTAL PARTICIPATION SKI & WILDERNESS



Gender was not indicated for 3% of SKI participants and 4% of WILDERNESS participants.

PARTICIPANTS WERE FROM 44 STATES + WASHINGTON, DC. All states except: Idaho, Maine, North Dakota, Oregon, Vermont, and West Virginia. Participants traveled from **10 COUNTRIES** including: Australia, Bahamas, Canada, Costa Rica, Mexico, UK (Scotland, England, and Wales), and Northern Ireland.



THE MOST COMMONLY SERVED DISABILITIES IN 2017-2018 WERE: Autism, traumatic brain injury, developmentally/cognitively/learning disabled, Down Syndrome, mental illness, spinal cord injury, cerebral palsy, Post Traumatic Stress Disorder, visually impaired, multiple sclerosis, ADD/ADHD, amputees, cleft lip and pallet, and abused, neglected and at-risk youth.

The Year in Highlights

A great many things happened at BOEC this past fiscal year. The following highlights some of our major accomplishments.

PROGRAMS

ADAPTIVE SKI AND RIDE PROGRAM

BOEC's Adaptive Ski and Ride Program – through both Breckenridge and Keystone Resorts – conducted 3,310 programming days serving 1,236 adults and children with a wide array of disabilities and special needs. Participants came from across Colorado and the U.S. – as well as 10 different countries – to experience the joy of skiing and snowboarding. Many longtime participants returned, including the U.S. Association of Blind Athletes (USABA), Children's Hospital Colorado, The Joshua School, Evergreen Parks & Recreation, Therapeutic Recreation Program (TRP) of Colorado Springs, The Not Forgotten Association, and Fox Valley Institute. And, we added some new groups such as NeuAbility, Pike's Peak Shredders, and the Wounded Warrior Project.

"I had an absolute blast skiing. It was probably the most fun athletic thing I have done in years! I was very nervous beforehand, but NEVER nervous when I was skiing...even over the jump! Thank you for such a great time! You don't know what this means to us who can't walk. You provide a feeling we can't get without your help. Thank you! Next year, I am going all day and on the blues!"

—BOEC Adaptive Ski Participant

WILDERNESS PROGRAM

The Wilderness Program, which runs year-round, served 1,530 students for a total of 4,577 programming days. Of those participants, 63% hailed from Colorado with 253 of them from right here in Summit County. In line

"A huge thank you to the amazing BOEC team! My son had an amazing time and learned so much over the 2 days. We are already planning our next trip and really hope we get to work with these amazing people again."

—BOEC Adaptive Ski Parent

with the Adaptive Ski and Ride Program, participants came to us with a wide assortment of disabilities and special needs. Thanks to our great community of partners and supporters, we were able to expand the Wilderness Program by creating new programs during the shoulder season, hosting both Jefferson Medical School and Riverview Middle School, who will both return next year. BOEC is also working to expand partnerships with local groups, including the Timberline Adult Day Center in Frisco that provides support and activities for adults with special needs.

Thanks to the generous support of donors, we initiated a paddleboard program with three standard boards and two adaptive paddleboards that support wheelchairs, and received additional funding to build adaptive tent platforms around the Wilderness Site to offer true camping experiences for our students with mobility challenges.

There were a number of returning agencies and groups in 2017-2018, with most of them having partnered with BOEC for over 20 years. Some of these longtime partners include Children's Hospital Colorado, King Adult Day Enrichment Program, Fox Valley, Brain Injury Alliance of Colorado, Jefferson Center for Mental Health, Community Resource Center, Hampden Academy, Summit County Youth and Family Services, The Challenge Foundation, Colorado Chapter of the National Hemophilia Foundation, Boulder Community Health, Tennyson Center, and North Metro Community Services.



"I want to express our sincerest thanks from the 8th graders and staff! We had a fantastic time with you all. The trip was better than anyone could've imagined! The students were thrilled about the delicious and plentiful food, the climbing and rafting days, games, skits, the campsite, your staff, etc.! Your staff was great and really created an engaging and safe experience for everyone. Thank you!"

—Agency Director

We are also very proud to add to this growing list with some new partners and programs this past year, including Jefferson Medical Student Wilderness Medicine Course, Riverview Middle School, Senior Learn to Hut trip, and Women's Heroic Ruby Horse Thief Trip. Looking ahead, BOEC plans to expand its offerings with a Brain Injury Alliance of Colorado (BIAC)/BOEC road trip to travel and camp over several days and enjoy the beauty of Colorado.

HEROIC MILITARY PROGRAM

The BOEC's Heroic Military Program continued to thrive in 2017-18, delivering 1,187 program days to 165 veterans with disabilities and 104 family members. A total of \$107,463 in restricted grants and contributions allowed these veterans and their families to participate at little or no cost to them. The majority of program funding came from the Department of Veteran Affairs which awarded the BOEC a \$62,316 grant.

All of our programs strive to provide opportunities for veterans to regain confidence in themselves and find connections with both other veterans and their loved ones. BOEC Wilderness Programs ran six events for 30 disabled service members and 62 family members, including our first all-women's program (Heroic Women's Ruby Horsethief River Adventure), Wounded Heroes Mountain Family Retreat, Heroic Families Wilderness Adventure, Heroic Families River Trip, Heroic Families Gates of Lodore Trip, and the Explosive Ordinance Disposal (EOD) Warrior Foundation Raft Trip.

The Adaptive Ski Program delivered another batch of courses, including Semper Fi, The Not Forgotten Association from London, Wounded Heroes Family Ski Week, USABA, and hosted two very successful

week-long events – Keystone Adaptive Military Camp at our Keystone Adaptive Center and The Hartford Ski Spectacular at Breckenridge Ski Resort.

INTERNSHIP PROGRAM

The BOEC's Internship Program continued its strong tradition of training young individuals interested in Outdoor/Experiential Education, Therapeutic Recreation, and Recreation Management to gain professional experience and knowledge in this growing field. In 2017-2018 we trained 14 winter and 12 summer interns that brought an infectious energy and optimism to all who worked with them. To date, we have graduated almost 1,000 talented professionals, many of whom have gone on to work in the adaptive outdoor education and therapeutic recreation field throughout the U.S. and in many parts of the world.

VOLUNTEERS

Volunteers have been the backbone of the BOEC for over 40 years, and this year was no different. Nearly 300 volunteers completed roughly 17,000 hours as assistant ski instructors, providing much needed support to our instructors and students. Volunteers also supported wilderness summer programming primarily in the adaptive cycling program and special events such as the Banff Film Festival, Breckebeiner Nordic Ski-a-Thon, Cinco de Mayo Celebration, and Tee It Up Golf Scramble. We could not do what we do without the enormous amount of time and energy provided by the volunteers, and for that we are extremely thankful.

"If I had any tear ducts in my eyes left, I would be crying right now. I just want to say thank you so much to everyone here, the BOEC staff, you helped me do things this week I never thought I would ever be able to do. I got to laugh with my family. I hiked up a mountain, and then through a waterfall. I got to experience a high ropes course with my family and encourage each other. But most of all I cannot remember the last time I laughed so hard, each and every day."

—Heroic Military Program Participant



FUNDRAISING

BOEC raised \$990,000 this year from our generous supporters, including \$150,850 for the *Securing the Future Capital Campaign*, \$137,648 in major individual gifts and \$485,545 in foundation grants. Our four signature events – Banff Mountain Film Festival, Breckebeiner Nordic Ski-a-Thon, Cinco de Mayo celebration and Tee It Up Golf Scramble – combined to raise over \$90,000.

“Just wanted to extend my thanks to you and the entire BOEC for the past three weeks. All four of us were expecting a great and fun experience, but I don’t think any of us realized how impactful it would also be on each of us. So on behalf of the squad, just wanted to say how much we appreciate you taking us in, being so welcoming and showing us how to take part in such a special environment.”

—First-time ski volunteers

Additionally, in-kind contributions totaled \$1.3M, while a number of third-party events and promotions helped us raise over \$20,000 during this fiscal year. The most notable events were The North Face Speaker Series with Alex Honnold, the We’re Open Raffle Sales, Caleb’s Ski Fundraiser, Coffee Depot Burrito Sales, and Nick Selway’s Art Gallery Grand Opening. Thank you to all of our gracious supporters, donors and sponsors that support the BOEC.

An anonymous foundation’s challenge grant greatly supplemented BOEC’s Staff Development Fund, raising \$100,000 to expand staff training and growth opportunities for interns, instructors, volunteers and administrative staff. The fund will be used over the next several years and will enhance our ability to provide the very best in staff expertise across all programs.

“Hey BOEC, thank you for an amazing season! It was such a pleasure volunteering for the first time and I am so happy I got to experience a new way of snowboarding with incredible people.”

—First-time ski volunteer

CAPITAL CAMPAIGN WRAP-UP

We completed the 3-year *Securing the Future Capital Campaign*, raising over \$2 million, the largest amount in the history of the BOEC. The core project of the campaign was a complete remodel and update of the *BOEC Basecamp*, our administrative and logistics center, including critically-needed seasonal staff housing, upgraded administrative offices, and improved warehousing for our outdoor adaptive equipment. The addition of staff housing has already enhanced our ability to attract and retain quality staff by providing affordable housing in the expensive Summit County market.

We owe a huge thanks to all of our donors (see full list under *Contributions*) and a special acknowledgement to our key partners – Town of Breckenridge for their ongoing and generous in-kind support, Carl and Caroline Swanson Foundation for their seed gift of \$250,000, Rockridge Building Company and Jon Gunson of Custom Mountain Architects for taking on the projects pro bono, and Tim Casey for his leadership and contributions to the campaign.

BOEC STAFF

ADMINISTRATION

SONYA NORRIS

Executive Director

LISA GAMBER

Finance Director

MELISSA KUWAHARA

Accounting/Office Manager

DEVELOPMENT

HALLIE JAEGER

Development Manager

BARRY RUBENSTEIN

Marketing & Events Manager

WILDERNESS PROGRAM

JAIME OVERMYER

Program Director

CLAIRE DICOLA

Associate Program Director—Admissions

ELLA GREENE

Associate Program Director—Operations

DAN DEERING

Facilities and Capital Manager

ADAPTIVE SKI AND RIDE PROGRAM

JEFF INOUE

Program Director

AMANDA COALE

Assistant Ski Program Director

MARK GREER

Ski Program Supervisor

SARA GOODELL

Volunteer Coordinator

KAYLEE BROWN

Ski Office Coordinator

KATIE BREW

Keystone Adaptive Center Coordinator

JACKIE BARBER

Keystone Adaptive Center Assistant

INTERNSHIP PROGRAM

KAT BOOTH

Intern Program Coordinator



Contributions

Thanks to all our contributors for the fiscal year October 1, 2017 to September 30, 2018. Please notify us of any errors or omissions. In-kind donations are indicated by (*) and cash plus in-kind donations are indicated by (**).

\$50,000+

Town of Breckenridge**
Blue River Sports/Mountain Wave**
Breckenridge Ski Resort*
Carl and Caroline Swanson Foundation
Columbine Hills Concrete, Inc.**
Custom Mountain Architects*
Department Of Veterans Affairs
Keystone Ski Resort*
Rockridge Building Company*
Anonymous
Tim Casey**

\$20,000 - \$49,999

Boettcher Foundation
Charina Endowment Fund, Inc.
Copper Mountain Resort*
Dave Newkirk and Susan Lazo
Denver Active 20/30 Children's Foundation
Phil and Barbara Gibbs
ifurnish*
MaggieGeorge Foundation
Quest Mountain Audio Video**
The Denver Foundation, Lowe Fund
The Summit Foundation

\$10,000 - \$19,999

Jane Barber
Kim and Rosie Batcheller
Breckenridge Building Center*

Breckenridge Grand Vacations/BGV Gives**
DiCola Family Foundation
El Pomar Foundation
Bill and Susy Gillilan
James L. and Ann R. Foil Foundation
Anonymous
John Humbrecht*
Robert Mathis
Mountain Multi-Vision & Sound*
RG Roof and Construction**
Roy A. Hunt Foundation
Margie Sinton**
Dr. Aris and Suzanne Sophocles**
Storm Enterprises/Mi Casa**
The Virginia Hill Charitable Foundation
Vail Resorts EpicPromise*

\$5,000 - \$9,999

18th Judicial District
African Eyes Travel*
Ed Anderson
Anschutz Family Foundation
Brownell Bailey
J.P. and Kristen Bennett**
Pat Campbell and Nick Smith
Ceres Landscaping*
John and Neide Cooley
D'Augustine Foundation
Davignon Charitable Fund
Dick Metz-Project For Good Fund
Jonathan and Robin Gear

Louis R. & Dorothy M. Meister Foundation
Microsoft
Nearby Neighbors Foundation
Neely Architecture*
Neils Lunceford Landscaping*
Recycle Sports, LLC
Robert and Mary Jane Smith Foundation
Rothey Landscaping*
The Becker Schwartz Family
Summit Interiors*
Gurney and Lisa Sloan**
The Rossetter Foundation
Thetford Landscaping*

\$1,000 - \$4,999

Edward Ahlstrand
AMR Ski Shop*
Jim and Amy Anderson
Bob and Amy Arzbaeher
Ball Corporation
Bighorn Rentals
Thomas and Susan Bratschun
Breckenridge Lands, LLC*
Breckenridge MTN Rotary Foundation
Breckenridge Nordic Center**
Doug and Peggy Brown
Charles Cannon
Joe and Ann Chamberlain
Chevron Matching Employee Funds
Chase and Susan Coale

Coffee Depot
Columbia Breckenridge**
Cornerstone Real Estate**
Laura Cratin
Creative Cabinetry
Larry Crispell
CTL Thompson, Inc
Elliott and Liz DeLoach
Ruthann Dicembrino
Daniel and Julie Dobler
John and Linda Ebright
Nancy Fegley
FirstBank of Breckenridge
Bruce Fitch and Gini Bradley
Bob Follett
G³ Family Fund
Gary Soles Gallery*
Alex Gelb
Linda Hammond**
Harris Construction*
Henry W. Bull Foundation
HP Foundation
Don Johnson
Kevin Kramer
Roger and Jill Kurtz
Ted and Jean Lawson
Limber Grove Headwear
Jerome and Lynn Lohmann
Jim Mallouk and Leslie Stafford**
Margaret T. Morris Foundation
Bernard-Dean and Julie Marucci
Dwight and Diane Mikulis
Mike Miller



Mountain Pride Cleaning and Restoration
 Michael and Dayna Murphy
 Nathan B. & Florence R. Burt Foundation
 Thomas Neils*
 Norehad Charitable Trust
 Orr Concrete, Inc.*
 Mark and Susan Pannwitz
 Dr. Craig Perrinjaquet
 QEP Resources
 Rob Karbowski Seamless Gutters & Icemelt Systems*
 Clarice Sage
 Scotty McFadden Foundation
 Scott and Debbie Sodergren
 Brian Solganick
 Cynthia and Howard Solganick
 South Park Exxon
 Southwest Airlines*
 Spartan Race, Inc.
 Stan Miller*
 Stratagem Construction Inc.
 Stuhr and Associates, L.L.C.
 Summit County Senior Citizens
 The Colleen Healey Charitable Fund
 The Giving Solace Fund
 The Starfish Foundation
 Joyce Thurmer
 Bob Topp and Raule Nemer
 Town of Dillon**
 Town of Frisco**
 Town of Silverthorne
 Debbie Trevino*
 Jim and Marty Trisler
 US Bank Foundation
 John and Sheila Walker
 Rik and Susan Washburn
 We're Open Open
 Joe Wilson
 Hans and Mary Jane Wurster
 Gertrude Young*
 Zoller's Outdoor Odysseys*

\$250 - \$999

Alpine Limo*
 Anthem Dollars For Doers
 Arapahoe Basin Ski Area
 Harry Backas
 Jack Baird
 Ron and Robin Benko
 Gregory and Jennie Bilhartz
 Susan Bishop
 Black Diamond Equipment*
 Carter Blanton
 Judith Boulad
 Breckenridge Dental Group**
 Doug Briggs*
 John and Marilyn Broughton
 Phil and Janelle Brown
 Steve Brown
 Vanco Buca
 Jeff Cain
 Chris and Eleanor Cares
 Cheryl Chambers
 Melissa Chambless
 Mark and Sharon Chertok
 George Quick and Jaycee Chinn
 Kelli Cholas
 Christy Sports- Main Street Station*
 Chris & Deb Coles
 Colorado Mountain Express*
 Steve Corneillier
 Carl Covington
 Dr. and Mrs. Edward Crane
 Patrick Crane
 Daley-Sosville Family Fund
 D'Andrea & Associates
 Lindsay Davis
 Charles Dayton and Sara Evans
 Disabled Sports USA
 Distinctive Woodworks*
 Shawn Doherty
 Don't Go Nuts*
 David Dross
 Wally and Maggie Ducayet
 Evan and Kim Ela

Robert Emde
 Empire Burger
 Armella Ettinger
 F. Cubed Foundation
 Nicolette Filipek
 John and Sarah Finn
 Edwin Fischer
 Florence's Hat Project
 Gary and Janet Freese
 Wayne & Peggy Galvani
 Jerry and Marge Gavenda
 Beth Gunnufson
 Robert Hanser
 Grant and Virginia Hanson
 Clark and Ruth Hawksworth
 Gisela Hillyer
 Marc and Marilyn Hogan
 Hughes Landscaping
 Todd Hunt
 Joe and Mary Lee Irwin
 Connie Johnson*
 Erik Johnson
 Tim and Grace Keeling
 Kenosha Steakhouse
 Vince King
 Angela Knightley*
 Jacquelyn Kriegel
 Justin and Dani Kupperman
 Anne Lacelle
 Teri Lee
 Levis Family Foundation
 Tony Lord Excavation*
 Martin Margulies
 Tom and Theresa McDougal
 Kim and Lee McGahey
 Wayne McLaren
 Mistler Family Foundation
 Mountain Angler*
 Steve and Bernita Moul
 Brian Munger
 Nature's Own**
 Ralph and Shellie Nowicki
 John O'Donnell
 Mark & Gretchen Olmstead

Jack and Pamela O'Neil
 Jim Parker
 Terry and Teresa Perkins
 Leah Pierce
 Charlotte Robinson-Pritchard
 Rotary Foundation Of Summit County
 Dwight Rounds*
 RRC Associates, Inc.
 Saint Anthony Summit Medical Center
 Robert and Catherine Salipante
 Sauce on the Maggie*
 John and Kathleen Schnobrich
 Silverthorne Subway**
 Slifer, Smith & Frampton Foundation
 Marci Sloan**
 Jerome and Helen Smith
 James and Maree Sneed
 Southern Wine & Spirits*
 Don and Mary Margaret Spitzer
 Paul Duden and Francesca Stevenson
 John Stone
 Jena Stricklan
 Kari Stuhmer
 Craig Temmer
 The Annette & Anthony Albanese Foundation
 The Hermitage Bookshop**
 The Nick Selway Gallery**
 The Raven at Three Peaks Golf Club*
 Robert and Molly Walsh
 Michael Walzak
 Paul and Patty Watson
 Stephen Watson
 James Weitekamp
 Eric and Dawn West
 Steve and Karen West
 Debra Wilken

And our appreciation to the many \$1 - \$249 donors!



Financials

Independently audited by Stuhr & Associates, LLC

Statement of Financial Position, September 30, 2018

With Summarized Financial Information as of September 30, 2018

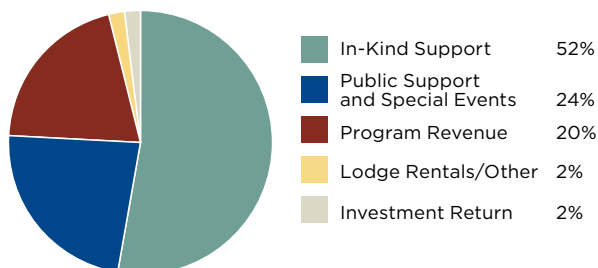
		FY 2017-18	FY 2016-17
ASSETS			
Cash and cash equivalents		412,841	550,207
Short-term investments		364,575	609,834
Accounts receivable		68,096	81,177
Pledges receivable		100	36,500
Prepaid expenses		21,079	17,062
Long-term investments		1,218,390	1,135,066
Property and equipment (net), inventories		1,980,143	884,526
Total current assets		4,065,224	3,314,372
LIABILITIES AND NET ASSETS			
Liabilities:			
Accounts payable		119,457	48,889
Deferred revenues		28,880	18,320
Total current liabilities		148,337	67,209
Net Assets:			
Unrestricted		2,931,891	1,642,723
Temporarily restricted		546,008	1,165,452
Permanently restricted		438,988	438,988
Total net assets		3,916,887	3,247,163
TOTAL LIABILITIES AND NET ASSETS		4,065,224	3,314,372

Statements of Activities and Changes in Net Assets for the Year Ended September 30, 2018

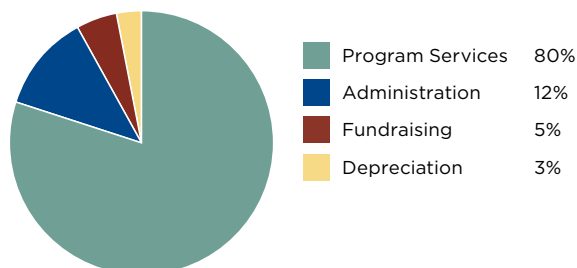
With Summarized Financial Information for the Year Ended September 30, 2018

	Unrestricted	Temporarily Restricted	Permanently Restricted	FY 2017-18 TOTAL	FY 2016-17 TOTAL
PROGRAM AND SUPPORT REVENUE					
Public Support:					
Contributions, donations and grants	406,369	495,512		901,881	763,914
Program Revenue:					
Tuition	1,089,770			1,089,770	997,238
Less scholarships	(286,448)			(286,448)	(240,172)
Net tuition	803,322			803,322	757,066
Additional program fees	41,878			41,878	43,545
Program in-kind support	2,212,501			2,212,501	1,987,463
Lodge Rentals	96,992			96,992	94,639
Special Events	72,056	15,871		87,927	78,169
Misc. income	897			897	1,735
Investment Return	74,191	16,768		90,959	116,738
Net assets released from restrictions	398,813	(398,813)			0
Satisfaction of Capital Campaign restrictions	748,782	(748,782)	0	0	0
Total revenues, gains and other support	4,855,801	(619,444)		4,236,357	3,843,269
EXPENSES					
Program services	2,868,472			2,868,472	2,767,282
Administration	421,590			421,590	393,343
Fundraising	180,398			180,398	175,090
Depreciation	96,173			96,173	95,118
Total expenses	3,566,633			3,566,633	3,430,833
Change in net assets	1,289,168	(619,444)		669,724	412,436
Net assets as of beginning of the year	1,642,723	1,165,452	438,988	3,247,163	2,834,727
Net assets as of end of year	2,931,891	546,008	438,988	3,916,887	3,247,163

Revenues FY 2017-18 \$4,236,357



Expenses FY 2017-18 \$3,566,633



“THANK YOU *so much for the most wonderful experience you provided for my 2 grandsons. Their lessons provided them with the fun and skills to aid them in feeling confident and comfortable on the ski trail. The excitement and joy was evident each day. Your instructors were patient, caring and skillful, and more importantly made each boy feel as if they were spending time with people who really cared about them. I want to thank you and your staff for providing such a positive experience, as we had come to expect. We hope to see you again.”*

—BOEC Adaptive Ski Grandparent



**Breckenridge
Outdoor
Education
Center**



P.O. Box 697 • Breckenridge, CO 80424
(800) 383-2632 • (970) 453-6422 • fax (970) 453-4676

www.boec.org



The BOEC operates on public lands under special permits from the US Bureau of Land Management and the US Forest Service, USDA. Please protect and preserve our public lands. Leave No Trace!

Annual Report design provided by MEMBERSHIP MARKETING PARTNERS, LLC.

©2018 Breckenridge Outdoor Education Center.